



Airport Update

February 21, 2024

- 1. Apologies**
- 2. Minutes of Meeting of 6 December 2023**
- 3. Matters Arising**
- 4. Dublin Airport Update**
 - **Water Quality**
 - **Air Quality**
 - **Noise**
- 5. Fingal County Council Planning Applications**
- 6. Members Update**
- 7. AOB**

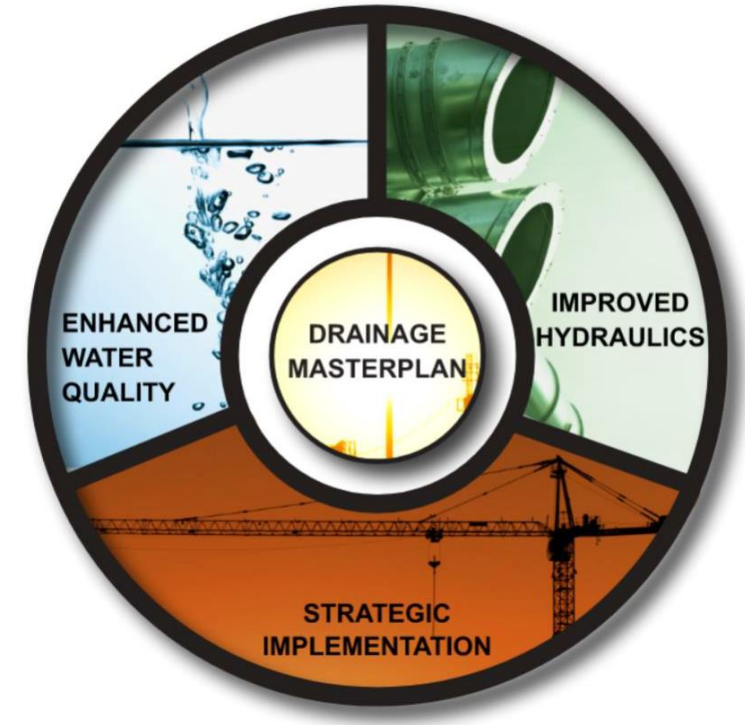
Drainage Management Plan

DAEWG 21st February, 2024

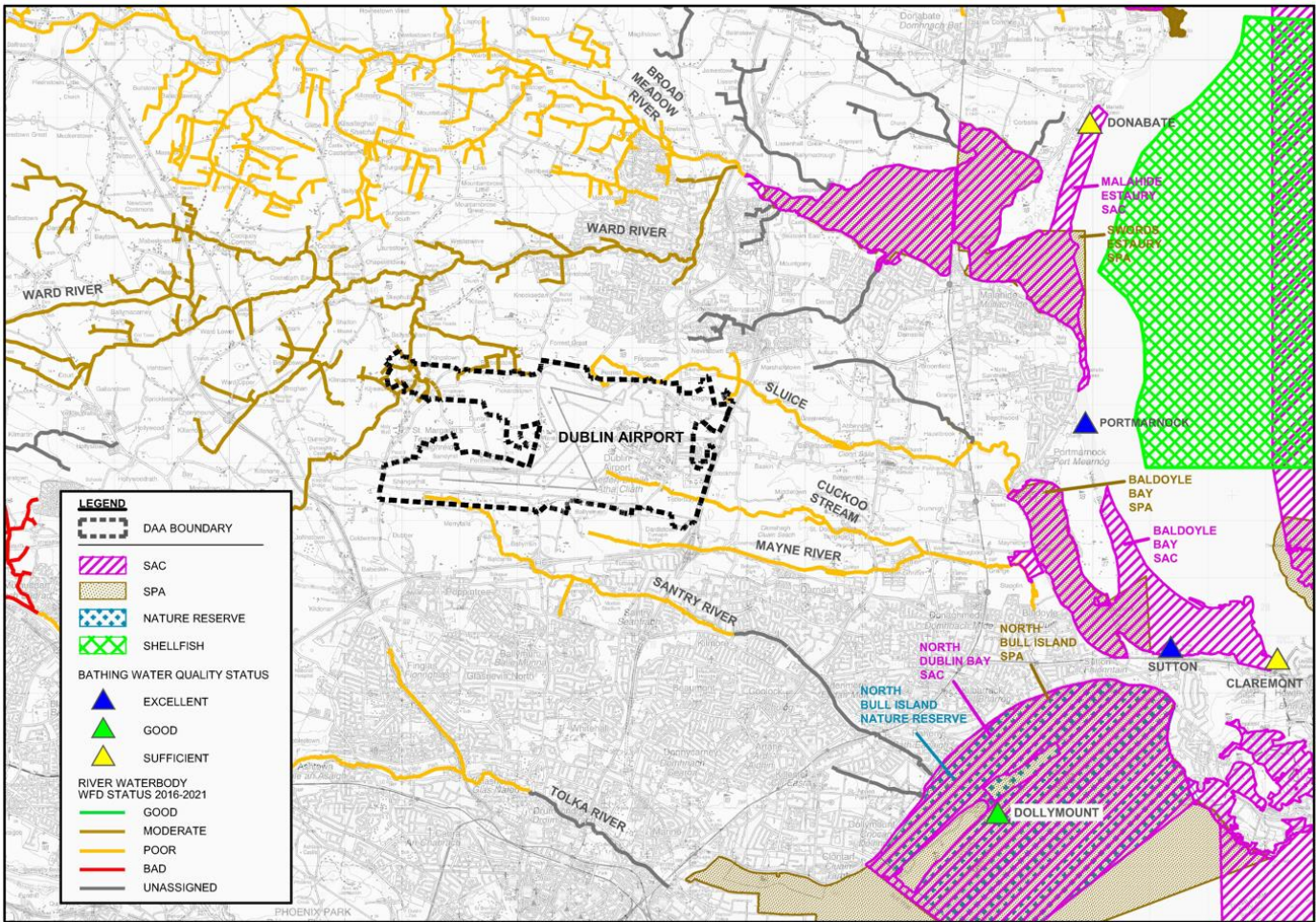
Drainage Masterplan (DMP)- Purpose and Objectives

Holistic long-term drainage strategy for future developments up to 55mppa, which:

- Enables the sustainable future growth of Dublin Airport.
- Enhances environmental performance, in line with daa sustainability objectives.



Existing Environmental Context

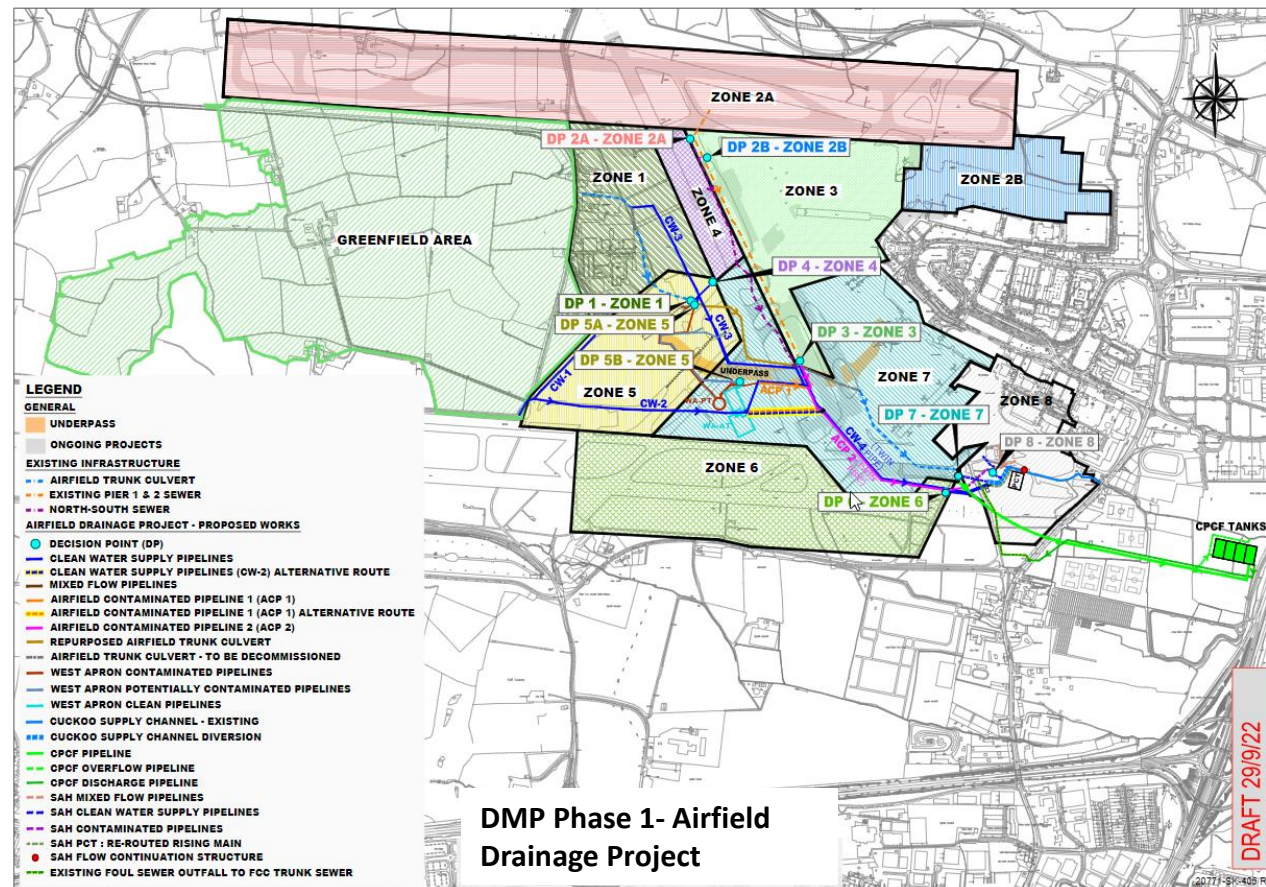


Catchment	Sub-catchment	Targeted for Improvement in draft 3 rd cycle RBMP?
Sluice	Kealy Stream	No
	Wad	
	Forrest Little Stream	
Ward	Ward	n/a
Santry	Santry	Yes – proposed Santry/Mayne AFA
Mayne	Mayne	Yes- proposed Santry/Mayne AFA
	Cuckoo Stream	

Summary of Proposed Surface Water Developments

An integrated site-wide surface water management system, with the following developments:

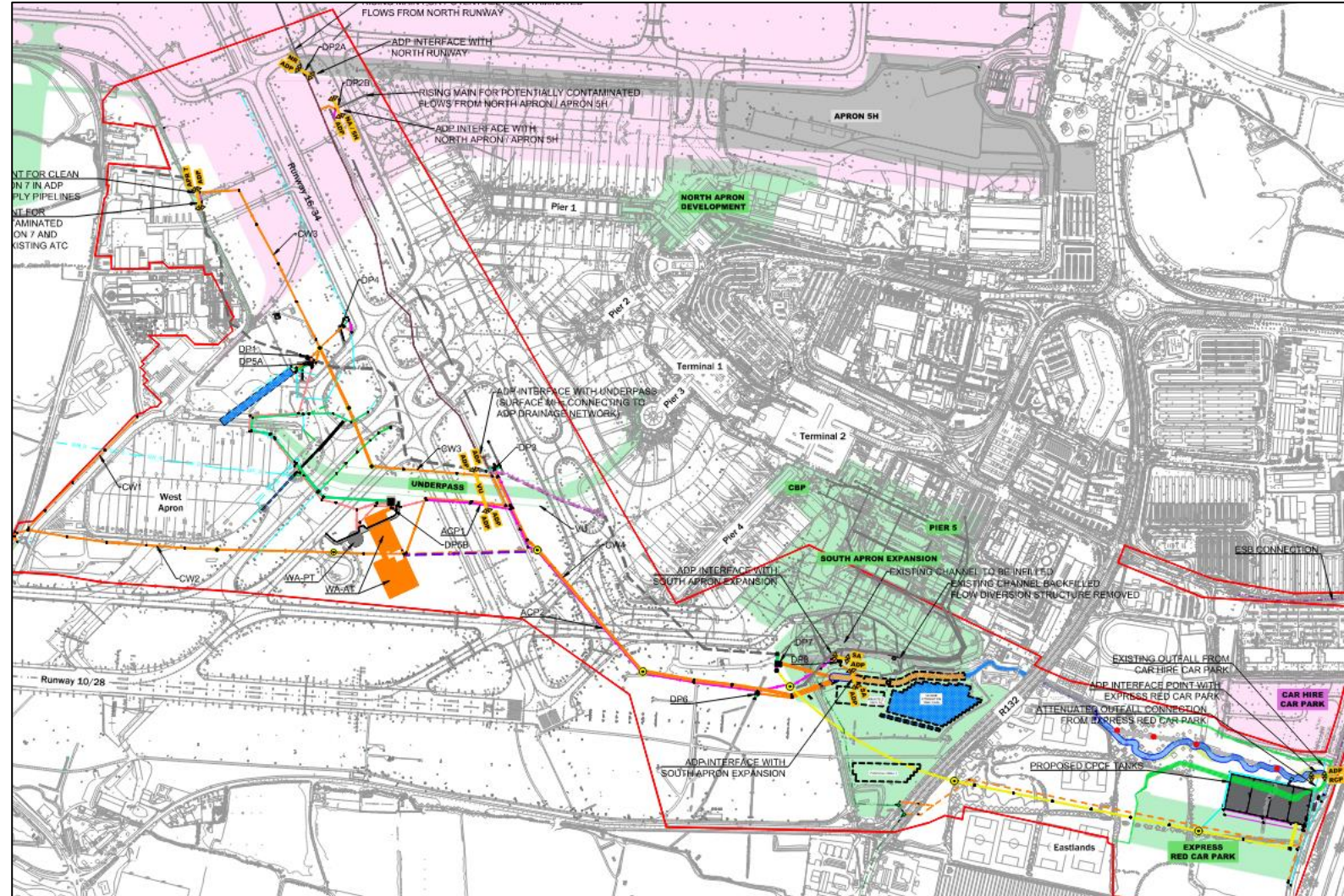
- Source control:
 - Standardisation of de-icing operations
 - Interception of greenfield inflows & roof runoff
- Contamination Detection and Response system:
 - Decision Points
 - Flow segregation (clean/contaminated)
 - Contaminated pipelines
 - Clean-only pipelines
- Pollution control infrastructure:
 - Store contaminated runoff & pump to sewer
 - Local Pollution Control Facilities (PCF)
 - Central Pollution Control Facility (CPCF)
- Airfield-wide SCADA control system
- Advanced surface water monitoring programme



Project Overview - ADP Project Description

The ADP proposes the following elements;

1. Contamination Detection and Response (CD&R) System
2. Central Pollution Control Facility (CPCF) Pipeline
3. CPCF
4. South Apron Network Reconfiguration
5. South Apron Attenuation and Channel Upgrades
6. Clean Water Supply Pipelines
7. Airfield Contaminated Pipelines
8. West Apron Network Upgrades
9. SCADA System
10. Eastlands Flood Alleviation
11. Cuckoo Stream Naturalisation





Noise Update

February 21, 2024

Content

1. Draft New Noise Monthly Report Format
2. Preliminary Noise Monitoring Data
3. Ground Noise vs Take-off Noise



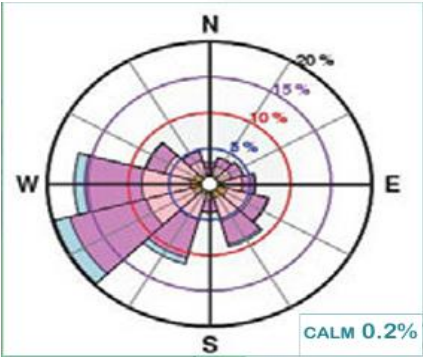
- Proposed new monthly report format will provide data on:
 - Dublin Airport Operations including movements and runway use
 - Noise Complaints
- New format aims to:
 - Respond to community feedback on their need for more information
 - Provide further data and information relating to monthly airport operations
 - Provide data in a primarily graphical format to aid understanding of the information
 - Reduce information provision which communities deem not to be useful in terms of their understanding of the noise situation surrounding Dublin Airport
- Further refinements and updates to this format may be made over the coming months to further improve the report and data offering to local communities and the wider public

Aircraft Movements (Cat ABCD)
January 2024

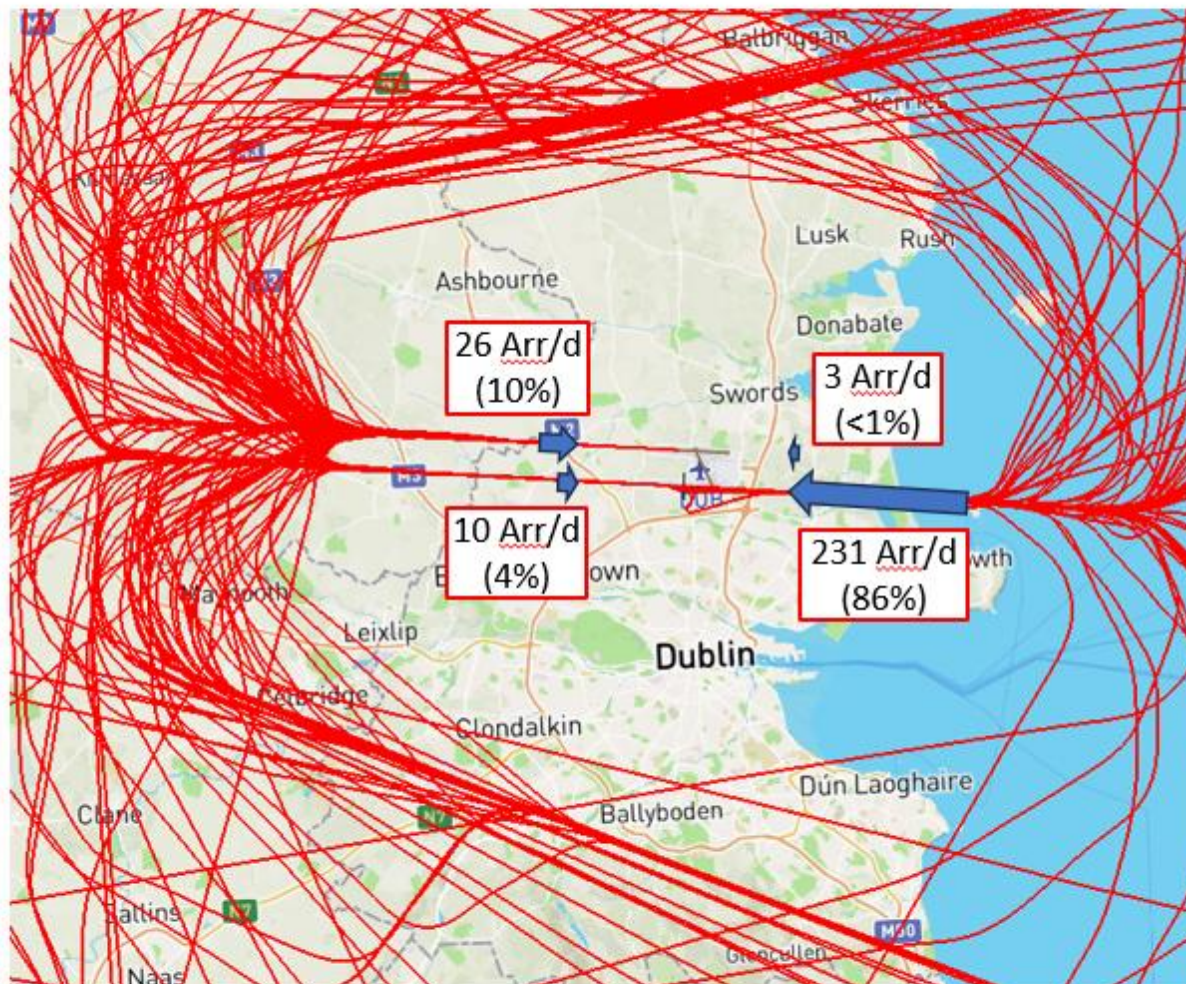
Zone		Arrivals		Departures		Total
A	South Runway	from West (RW10R)	316	to West (RW28L)	1213	1529
B		from East (RW28L)	7162	to East (RW10R)	1150	8312
C	North Runway	from West (RW10L)	795	to West (RW28R)	6000	6795
D		from East (RW28R)	78	to East (RW10L)	3	81
E	Cross Runway	from North (RW16)	0	to North (RW34)	3	3
F		from South (RW34)	0	to South (RW16)	0	0
			8351		8369	16720



Monthly Aircraft Movements YTD + 2023



*Typical Monthly Wind Rose
- shows percentage of time
with each wind direction*



Arrival Runway Use

- Arrival movements / day on each main runway
(with example flight track selection)

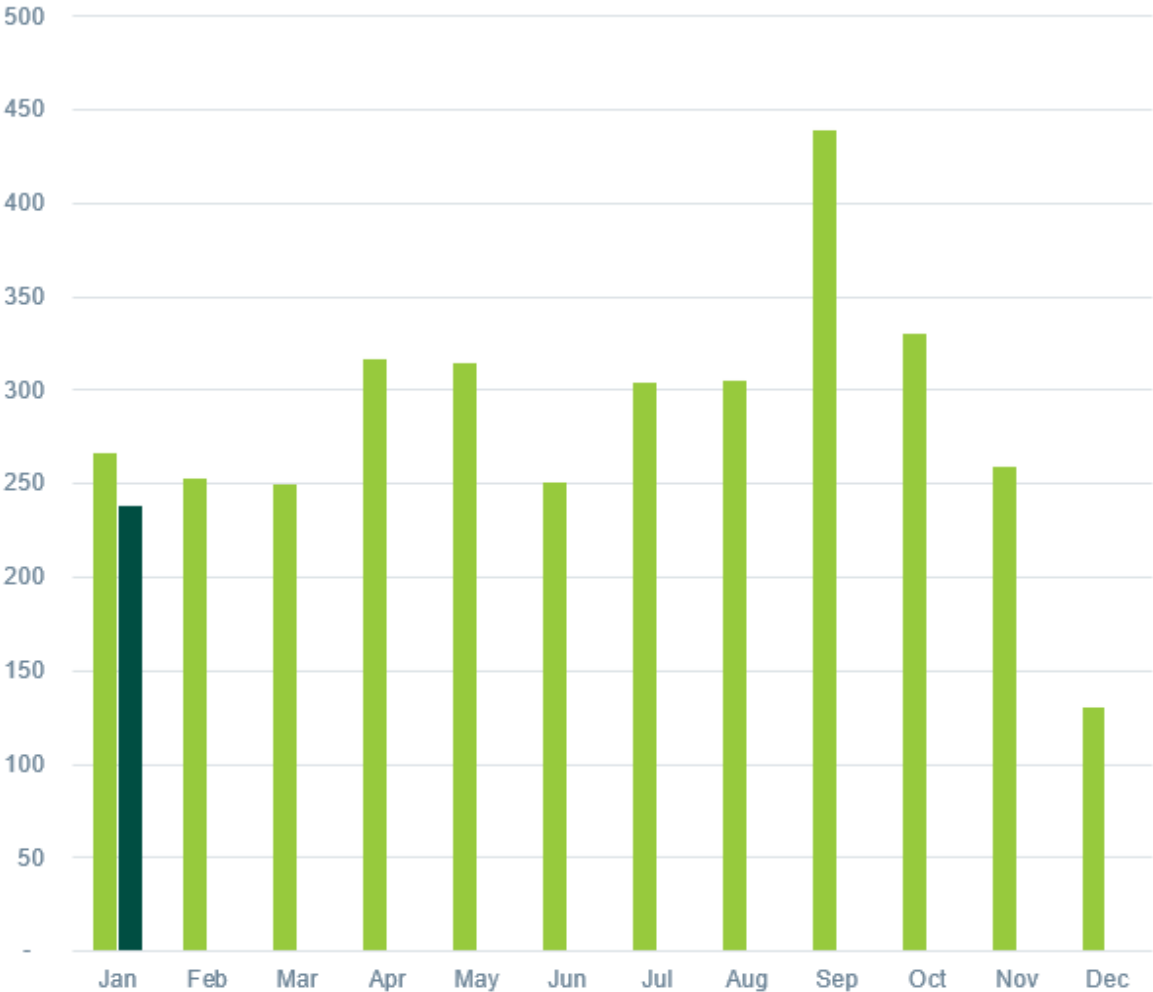


Departure Runway and Track Use

Departures/day on each main runway (Yellow), and
Departures/day in each main track swathe (Gold)
(with example flight track selection)

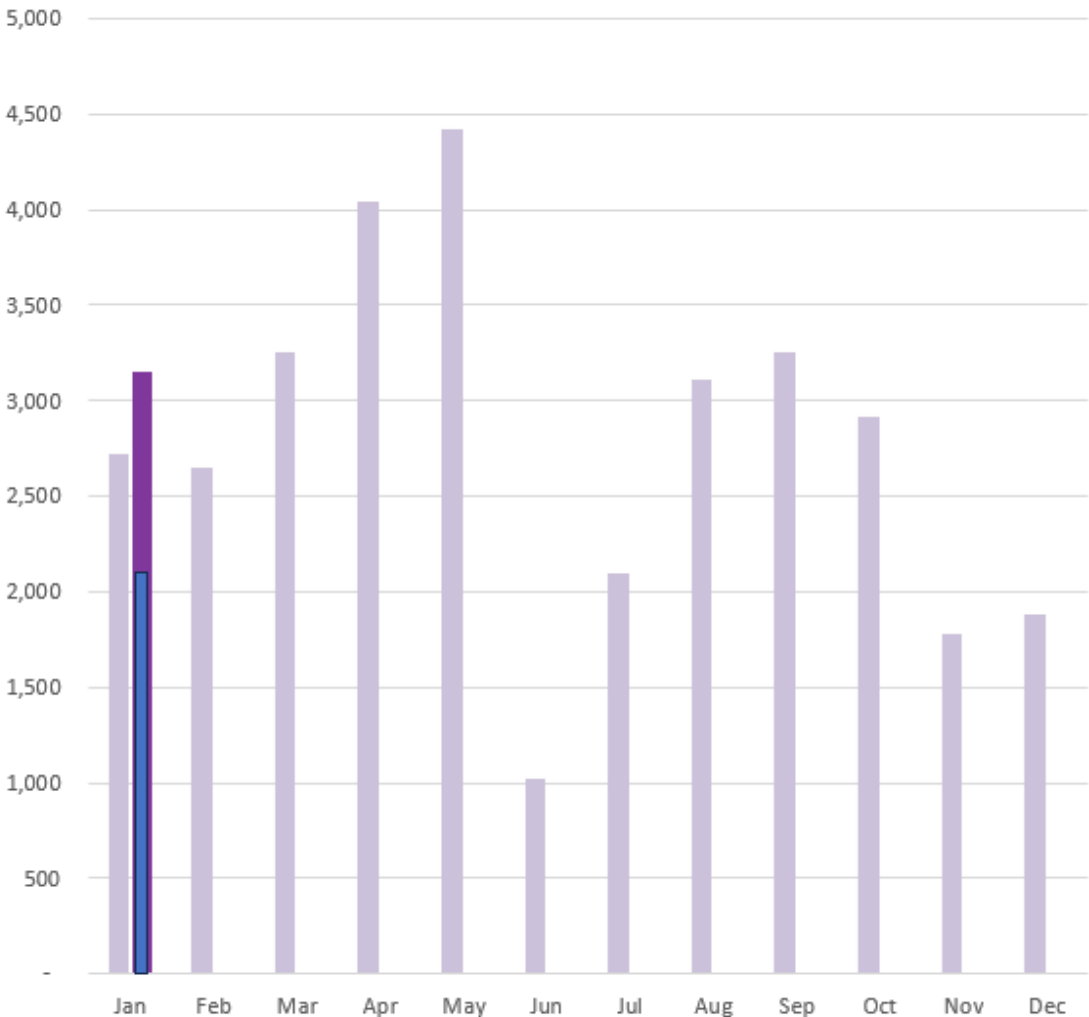
Number of Complainants

2023 2024



Number of Complaints

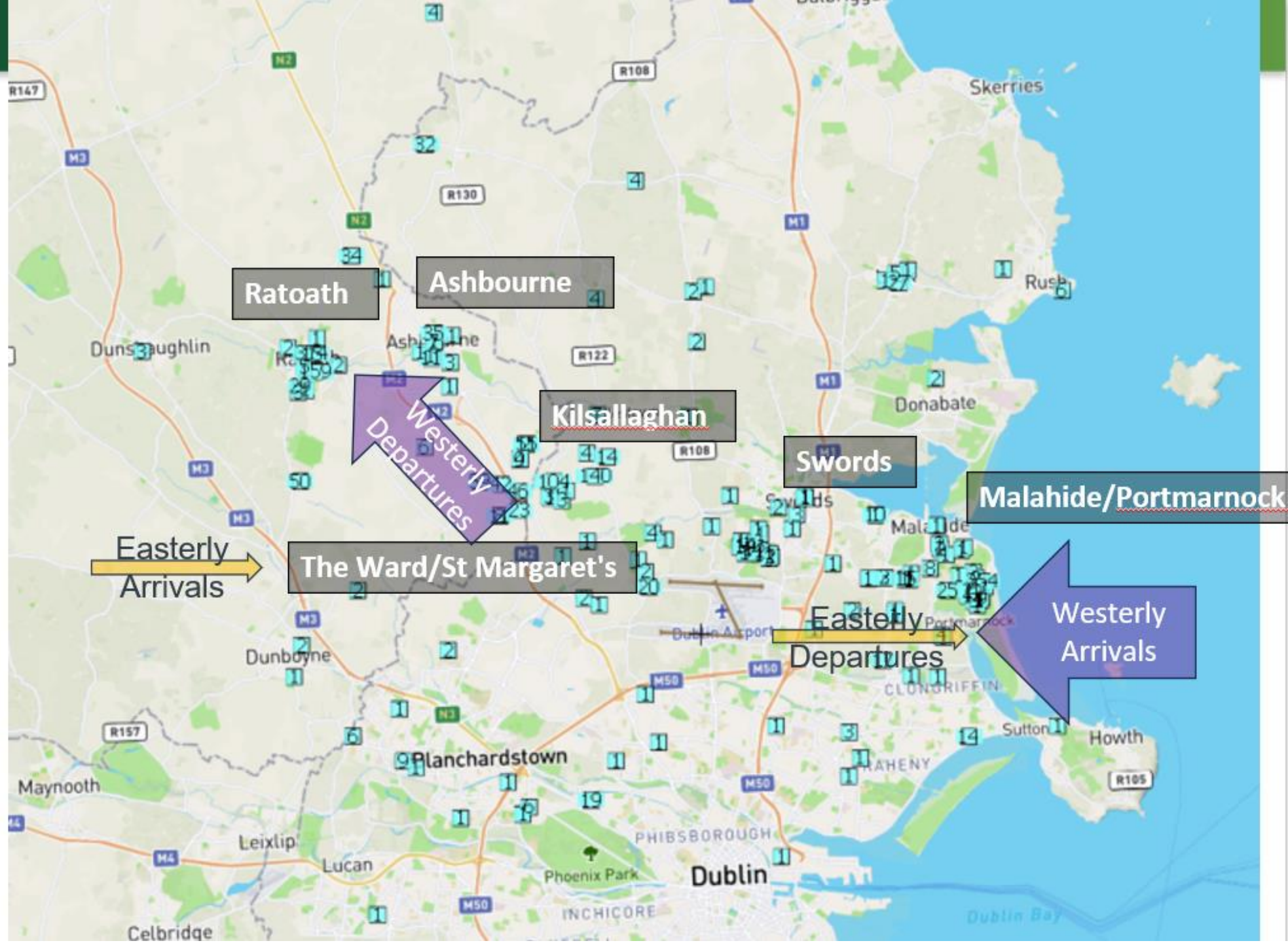
2023 2024 Top 5 complainants



Complaint Handling

Complainants Hotspot Area

Graph (Map) 5



Supplementary Data
to the Noise Monitoring Report for July – Dec 2023
(pending)

Including NMT data
from January 2021 through to December 2023

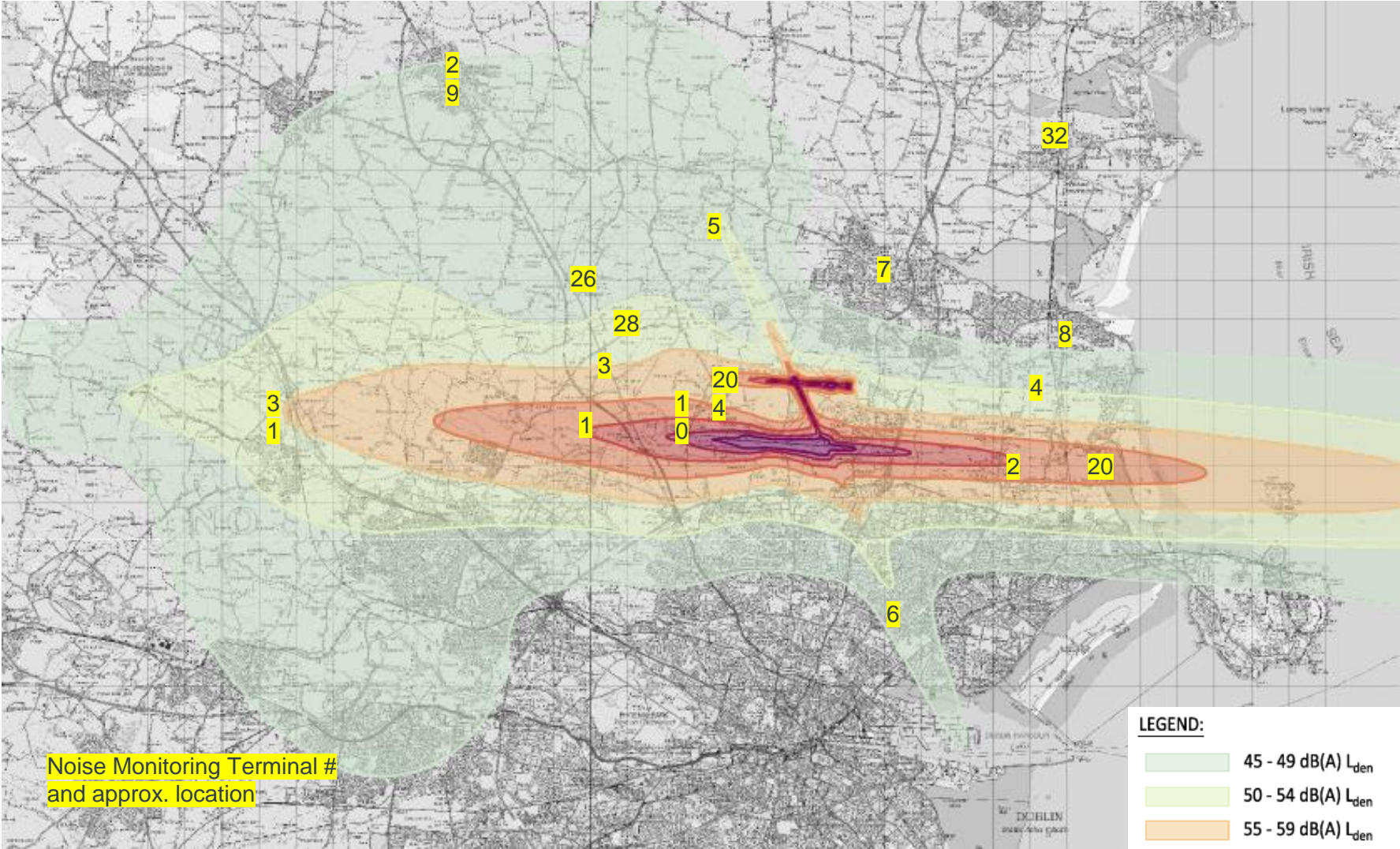


#	NMT Name	Since
1	Bay Lane	2021
2	St. Doolaghs	2021
3	Bishopswood	2021
4	Feltrim	2021
5	Balcultry	2021
6	St.Davids	2021
7	Swords	Q2 2022
8	Malahide	Q2 2022
10	St.Margarets NS	Q3 2022
20	OP	2021
26	Kilcoskan NS	Q4 2022
27	Summerhill	Q3 2023
28	Newpark	Q3 2023
29	Ashbourne RC	Q3 2023
30	Roundwood GAA	Q4 2023
31	Dunboyne EMR	Q3 2023
32	Donabate	Q4 2023
33	Ardgillan	Q4 2023
204	Milhead	Q3 2023

Noise Monitoring Terminal (NMT) locations



#	NMT Name	Lden 2022	Lden 2023
1	Bay Lane	66	
2	St Doolaghs	64	
3	Bishopswood	56	
4	Feltrim	50	
5	Balcultry	51	
6	St Davids	48	
7	Swords	<45	
8	Malahide	45	
10	St.Margarets Nat Sch	~63	
20	OP	62	
26	Kilcoskan Nat Sch	49	
27	Summerhill	<<45	
28	Newpark	54	
29	Ashbourne RC	46	
30	Roundwood GAA	<<45	
31	Dunboyne EMR	55	
32	Donabate	<45	
33	Ardgillan	<<45	
204	Milhead	~61	



Map of 2022 Lden Annual Noise contours

3 NMT (27, 30,33) are located outside this map’s boundaries
(2023 contours available Q1 2024)

Measured NMT Quarterly and Annual Aircraft Noise Lden
(with number of correlated DUB Aircraft Noise Events)
2021 and 2022

		2021										2022 (NR opens)									
		Q1		Q2		Q3		Q4		2021 Year		Q1		Q2		Q3		Q4		2022 Year	
LOC ID	Location	Lden	Events	Lden	Events	Lden	Events	Lden	Events	Lden	Events	Lden	Events	Lden	Events	Lden	Events	Lden	Events	Lden	Events
1	Bay Lane	59.3	4039	59.9	5199	63.3	14797	63.5	17611	61.9	41646	63.5	16781	65.5	26789	65.1	25544	64.6	17380	64.7	86494
2	St. Doolaghs	58.6	4458	58.5	5615	61.6	15161	62.7	18310	60.8	43544	62.8	17397	64.4	28158	64.8	29956	64.2	26009	64.1	101520
3	Bishopswood	49.3	1543	49.3	1447	52.4	4050	54.0	6526	51.7	13566	55.3	6235	53.8	7095	52.7	5720	55.2	9165	54.4	28215
4	Feltrim	41.9	498	38.5	400	38.2	598	44.8	1144	41.7	2640	50.1	2818	46.4	2821	41.9	1503	48.8	2821	47.7	9963
5	Balcultry	46.4	145	41.3	114	47.4	219	47.3	224	46.2	702	50.6	413	50.7	315	55.5	308	63.3	2107	58.3	3143
6	St.Davids	40.7	104	43.1	117	42.7	81	46.9	151	44.0	453	44.8	284	40.8	124	43.3	174	44.7	397	43.7	979
7	Swords													28.1	8	39.5	154	44.9	109	41.3	271
8	Malahide													38.2	12	32.3	212	34.3	197	35.7	421
10	St.Margarets Nat Sch															63.5	16871	64.0	18840	63.8	35711
20	OP	56.4	3658	56.5	5004	59.6	14215	60.8	17358	58.7	40235	60.8	16244	62.3	25981	63.0	27985	62.4	18603	62.2	88813
26	Kilcoskan Nat Sch																	51.5	2938	51.5	2938

Measured NMT Quarterly Aircraft Noise Lden (dBA)

(with number of correlated DUB Aircraft Noise Events)

2023 (Including new NMT)

		2023							
		Q1		Q2		Q3		Q4	
LOC ID	Location	Lden	Events	Lden	Events	Lden	Events	Lden	Events
1	Bay Lane	63.6	11311	66.1	13883	63.3	5685	63.6	4769
2	St. Doolaghs	64.2	24852	64.3	29563	65.3	33166	64.3	22706
3	Bishopswood	55.5	10200	57.3	14562	58.6	17047	58.2	15473
4	Feltrim	50.9	2746	51.1	4330	50.3	2268	52.1	3699
5	Balcultry	51.7	1878	43.8	103	39.9	123	38.7	87
6	St.Davids	39.4	106	38.0	267	38.0	156	36.9	119
7	Swords	39.8	132	47.5	107	46.6	125	38.8	121
8	Malahide	38.7	265	38.3	525	39.3	299	36.6	260
10	St.Margarets Nat Sch	63.7	17653	62.2	13981	63.9	22065	63.7	18270
20	OP	63.0	16677	60.7	14067	63.6	30963	62.5	25153
26	Kilcoskan Nat Sch	55.9	8124	56.5	7383	61.3	22235	60.2	17000
27	Summerhill					28.6	34	31.7	85
28	Newpark					60.6	13011	61.4	19089
29	Ashbourne RC					35.0	218	46.9	905
30	Roundwood GAA							12.3	1
31	Dunboyne EMR					(49.4)	(974)	50.7	1852
32	Donabate							0	0
33	Ardgillan							25.1	3
204	Milhead					62.5	1428	66.5	22853

Measured NMT Annual Lden and Lnight (dBA)

2021, 2022 (incl calculated Lden from 2022 noise contour) and
2023 (Lden and Lnight)

		2021 (Covid impacted)		2022			2023					
		From Q Reports		2022 NMT		2022 Contour	ANNUAL 2023 NMT					
LOC ID	Location	Lden	Events	Lden	Events	Lden	2023	Lden	Events	Lnight	Evnt (N)	
1	Bay Lane	61.9	41646	1yr	64.7	86494	66	1yr	64.3	35,542	56.8	14,229
2	St. Doolaghs	60.8	43544	1yr	64.1	101520	64	1yr	64.5	109,927	56.9	15,958
3	Bishopswood	51.7	13566	1yr	54.4	28215	56	1yr	57.5	58,564	46.1	2,849
4	Feltrim	41.7	2640	1yr	47.7	9963	50	1yr	51.1	13,161	43.7	1,784
5	Balcultry	46.2	702	1yr	58.3	3143	51	1yr	46.6	2,217	18.8	48
6	St.Davids	44.0	453	1yr	43.7	979	48	1yr	38.5	670	25.0	37
7	Swords			9m	41.3	271	<45	1yr	44.7	506	17.7	50
8	Malahide			9m	35.7	421	45	1yr	38.4	1,405	26.2	621
10	St.Margarets Nat Sch			6m	63.8	35711	~63	1yr	63.5	73,312	56.5	13,640
20	OP	58.7	40235	1yr	62.2	46588	62	1yr	62.5	86,372	54.9	12,966
26	Kilcoskan Nat Sch			3m	51.5	2938	49	1yr	59.1	54,742	35.8	306
27	Summerhill			-	-	-	10km Wof45Lden	5m	31.7	106	24.9	42
28	Newpark			-	-	-	54	5m	61.9	33,006	34.5	281
29	Ashbourne RC			-	-	-	46	5m	45.9	1123	23.9	7
30	Roundwood GAA			-	-	-	36km Sof45Lden	3m	12.8	1	0.0	0
31	Dunboyne EMR			-	-	-	55	4m	50.5	2,353	43.0	1,991
32	Donabate			-	-	-	5km Nof45Lden	5m	0.0	0	0.0	0
33	Ardgillan			-	-	-	17km Nof45Lden	1m	26.5	6	19.3	3
204	Milhead			-	-	-	~61	6m	65.0	24,281		

Do Noise Monitoring Terminals (NMT) measure “Ground” Noise?

- In short, an Airport Noise Monitoring System (ANOMS) NMT will monitor Start of Roll noise but generally not taxiing ground noise.
- A receiver location (a home or an NMT) would need to be very near a taxiway but well removed from a runway for the noise environment to be dominated by aircraft taxiing ground noise. There are probably no locations like this, other than standing a metre from a taxiway.
- Taxiway noise is not included as an aircraft operation event in the ANOMS system, so Aircraft Noise Events do not include taxiing noise.
- Locations side on and near to the runway will be subject to noise from aircraft on the runway, take-off or landing, including the initial high engine power Start of Roll (SOR) noise on take-off. In areas like Swords, many people report “Ground” noise, although it is most likely SOR noise. Unlike taxiing ground noise, SOR noise is included as aircraft operational noise in ANOMS, so it would be detected by an NMT near the runway and is also included in the airport noise contour calculations.



Surface Water and Air Quality Update

February 21, 2024

Surface Water Monitoring - Dublin Airport (November 2023- January 2024)

Sample locations - entering daa lands

Month	C1- Cuckoo Stream			C4- Cuckoo Stream			S1 - Santry Stream*			M1- Mayne Stream*		
	BOD mg/L	COD mg/L	Ammonia as N mg/L	BOD mg/L	COD mg/L	Ammonia as N mg/L	BOD mg/L	COD mg/L	Ammonia as N mg/L	BOD mg/L	COD mg/L	Ammonia as N mg/L
November	2.1	16	0.14	<10	48	0.02	-	-	-	-	-	-
December	2	26	0.17	4	37	0.53	-	-	-	-	-	-
January	6.4	13	0.15	1.6	57	0.08	0.6	16	0.05	0.2	34	0.88

Sample locations - on daa lands

Month	K2 - Kealys Stream			NRML 7 - Forrest Little Stream			W1 - Wad Stream*			NRML 1 - Ward Stream*		
	BOD mg/L	COD mg/L	Ammonia as N mg/L	BOD mg/L	COD mg/L	Ammonia as N mg/L	BOD mg/L	COD mg/L	Ammonia as N mg/L	BOD mg/L	COD mg/L	Ammonia as N mg/L
November	3	22	0.01	2.6	24	0.02	-	-	-	-	-	-
December	2.3	13	0.23	0.6	6	0.04	-	-	-	-	-	-
January	7.3	21	0.04	1.8	17	0.05	Awaiting results			<4	7	0.03

Sample locations - leaving daa lands

Month	C9 - Cuckoo Stream**			M5- Mayne Stream***			S3 - Santry Stream					
	BOD mg/L	COD mg/L	Ammonia as N mg/L	BOD mg/L	COD mg/L	Ammonia as N mg/L	BOD mg/L	COD mg/L	Ammonia as N mg/L			
November	3	8	0.01	1.7	6	0.01	1.7	22	0.05			
				1.9	22	0.02						
				1.2	18	0.03						
				2.8	20	0.04						
December	<10	16	<0.01	60	113	<0.01	2	28	0.51			
				4.5	35	<0.01						
	1.2	25	0.04	1.1	18	0.09						
				<4	15	0.08						
January	4.1	13	0.03	2.5	<5	0.06	1.4	15	0.05			
				15	29	0.04						
	7	31	0.06	<10	11	0.07						
				75	193	<0.01						

*quarterly sample

**twice monthly sample

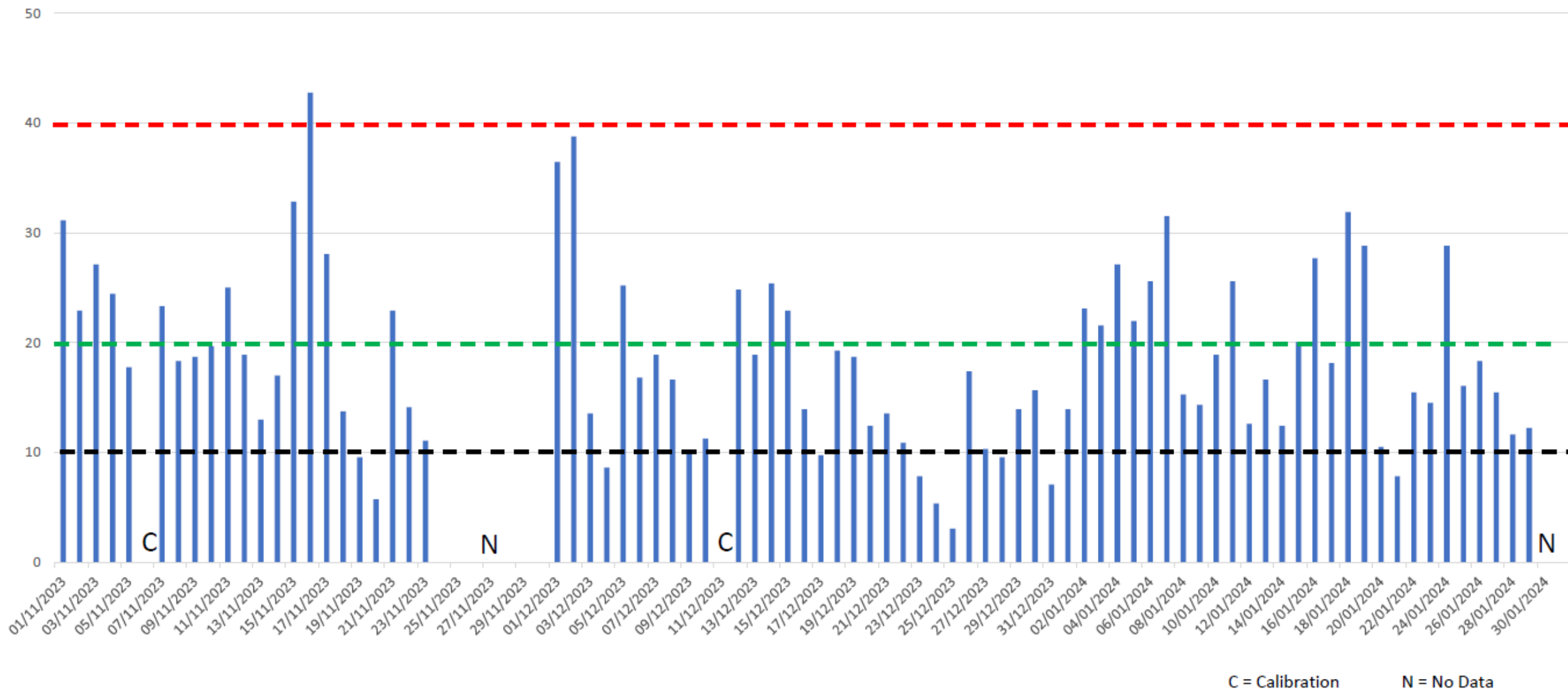
***weekly sample

NO₂ November 2023–January 2024

- NO₂ average for November 2023 – January 2024: 18 µg/m³

WHO Interim Targets

- EU Current Limit (40µg/m³)
- WHO Target 2026 (20µg/m³)
- WHO Target 2040 (10µg/m³)

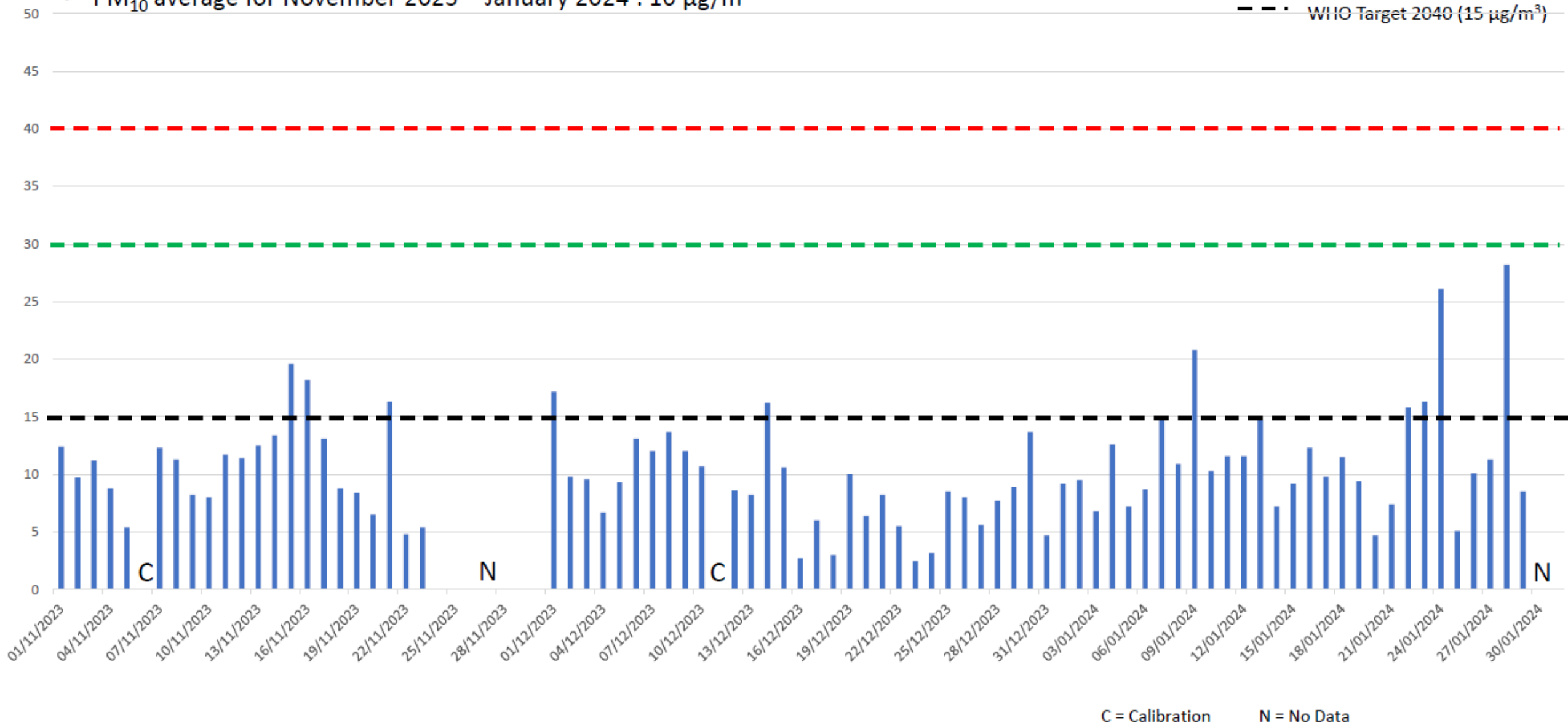


PM₁₀ November 2023 – January 2024

- PM₁₀ average for November 2023 – January 2024 : 10 µg/m³

WHO Interim Targets

- EU Current Limit (40 µg/m³)
- WHO Target 2026 (30 µg/m³)
- WHO Target 2040 (15 µg/m³)



C = Calibration

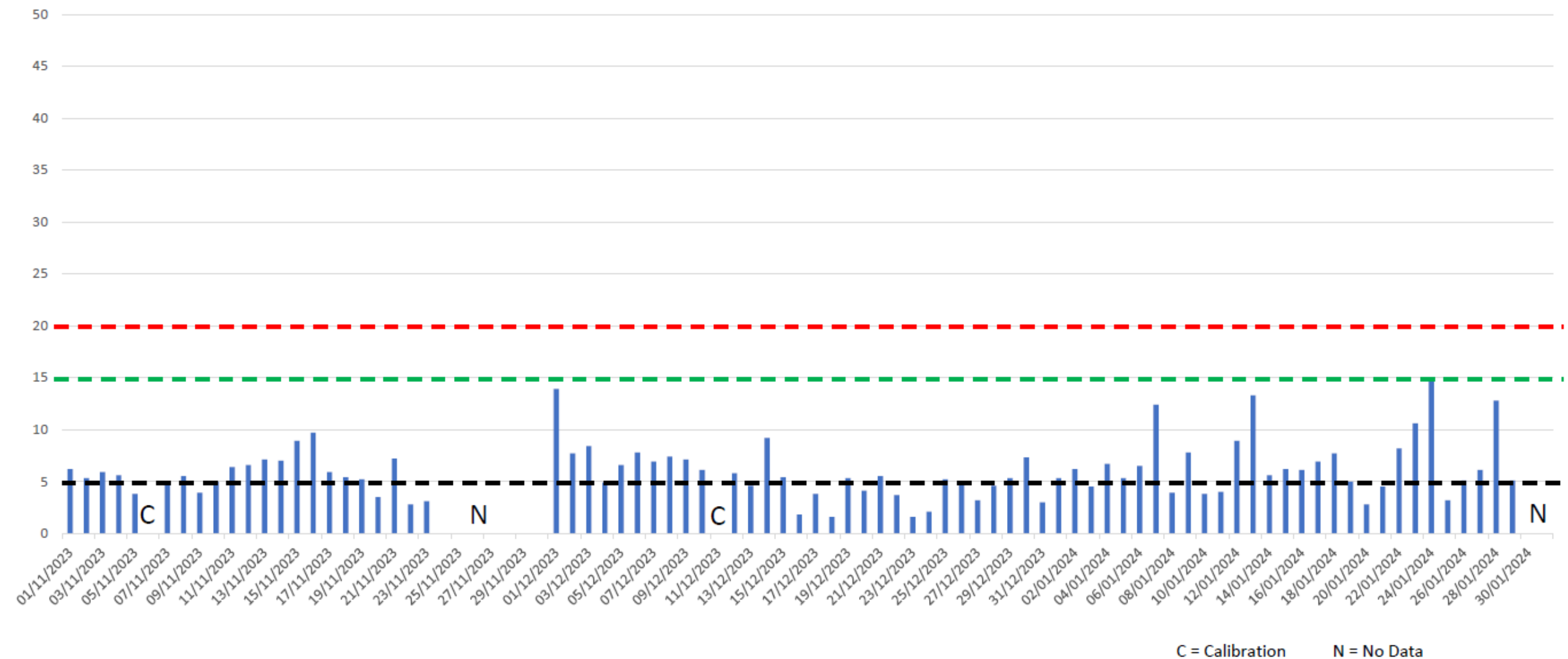
N = No Data

PM_{2.5} November 2023 – January 2024

WHO Interim Targets

- PM_{2.5} average for November 2023 – January 2024 : 6 µg/m³

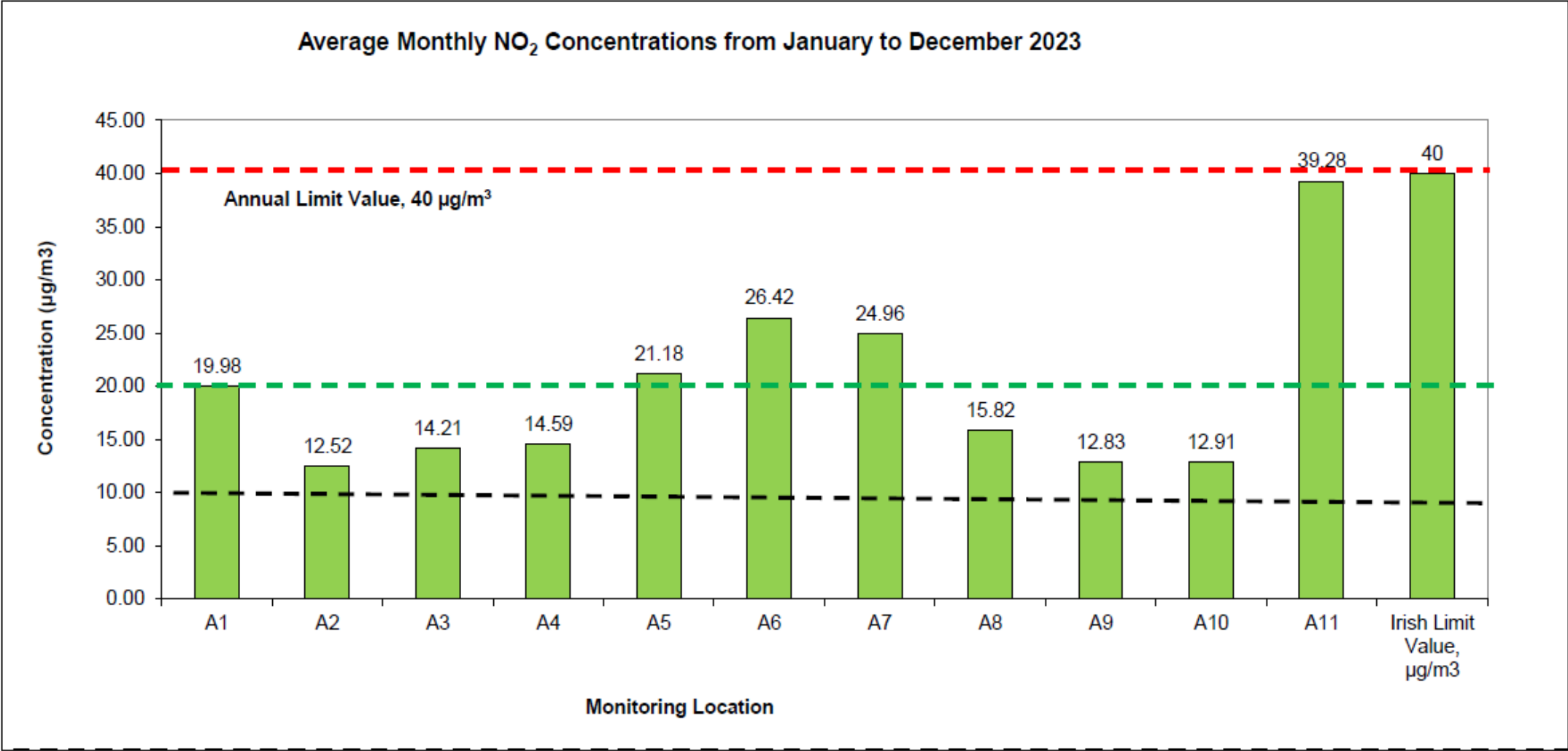
- EU Current Limit (20 µg/m³)
- WHO Target 2026 (15 µg/m³)
- WHO Target 2040 (5 µg/m³)



Dublin Airport Diffusion Tube Monitoring

WHO Interim Targets

- EU Current Limit (40 $\mu\text{g}/\text{m}^3$)
- WHO Target 2026 (20 $\mu\text{g}/\text{m}^3$)
- WHO Target 2040 (10 $\mu\text{g}/\text{m}^3$)





daa Update

February 21, 2024

- In 2023, Community Fund provided over €500k to support 111 projects.
- Since 2017, the Community Fund has allocated €2.4m in total to over 540 projects: The area of St. Margaret’s and the Ward has received €557k, Malahide and Portmarnock have received €423k, Swords has received €529k with Santry receiving over €127k.
- As the fund is now over five years in operation, we are undertaking a review of the criteria, eligibility etc. to streamline the process for future applicants. The next round of the community fund will open for applications from March 11 for six period.
- In January, Dublin Airport welcomed over 2.1m passengers, on par with 2023 numbers, across 16.8k movements.
- The next essential maintenance works are scheduled to take place over four consecutive nights from 11:00pm to 5:00am from Monday March 11 to Thursday, March 14.
- The indicative dates for the scheduled essential maintenance works that require South Runway closures in 2024 are as below. All dates are subject to change. If weather conditions are not suitable, the works will be rescheduled to take place as soon as possible thereafter.

Proposed Dates	Number of Nights	Comments
11/03/2024	4 nights 23.00 - 5.00hrs Local	Essential Maintenance Works
13/05/2024	4 nights 23.00 - 5.00hrs Local	Essential Maintenance Works
01/07/2024	4 nights 23.00 - 5.00hrs Local	Essential Maintenance Works
26/08/2024	4 nights 23.00 - 5.00hrs Local	Essential Maintenance Works
20/10/2024	4 nights 23.00 - 5.00hrs Local	Essential Maintenance Works

No	Issue	daa response
1.	GS requested further information on ground noise, taxi noise, and how these are monitored	IC and XO to present on this as part of the noise update
2.	PF requested further information on the drainage management plan	IC to update to the group as part of the daa update
3.	JH requested the BER assessment for insulation at his premises.	AF reverted to the project team, and this has been forwarded direct to JH
4.	GS queried the response from ANCA to attend the DAEWG meetings going forward	JD provided the response received by the Chair to members by email.
5.	Chair advised members that 2024 meeting dates will be circulated for the members to review.	The dates for DAEWG for 2024 are agreed as February 21, June 26, October 9, December 4. A joint meeting of the CLG/DAEWG will take place on February 27