

Dublin Airport Monthly Noise and Operations Report

August 2025

- Operations and Runway Use
- Noise Complaints
- Flight Track Monitoring

Part 1: Operations and Complaints



Page	Page Heading	Page Content
PART 1		
4.	Explanation of Terms	
5.	Operations – Movements and Runway Use	Provides an overview of the operations of the airport during the month, including arrival and departure movements, runway use, wind direction and movement comparisons with earlier months and the previous year.
6.	Operations – Runway and Track Use	Provides a representation of the distribution of arrivals and departures, along with data relating to the distribution of the main departure tracks.
7.	2024 Annual Departure Swathe Data	Provides an overview of 2024 runway and track use.
8.	Total Movements in the month by hour of day	Provides an overview of the number of movements by hour of the day.
9.	Noise Complaints - Complainant Statistics	Provides rolling data on complainant statistics, including total complaints received.
10.	Noise Complaints - Complainant Statistics	Provides data on the complaints received by area from top 10 complainants and a breakdown of complaints by the top five individuals.
11.	Noise Complaints – Area Analysis	Provides an overview of both the number of complaints and number of complainants by area.
12.	Noise Complaints – by Hour	Provides an overview of the number of movements by hour of the day.
PART 2		
9 – 17.	Flight Track Monitoring	

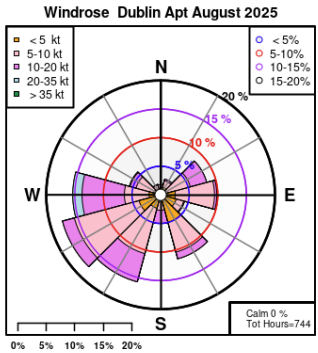
Term	Definition
Aircraft Movement	An aircraft movement is either the arrival or departure of an aircraft at Dublin Airport. For an arrival, the aircraft is detected by radar at least 50km from the airport and the route it takes is recorded in the noise management system until it touches down on one of Dublin Airport's runways. For a departure, the radar detects the flight as it leaves the ground and records the route until it is at least 50km away.
ANOMS	The Advanced Noise Management System is Dublin Airport's database and management system for recording aircraft operations, flight tracks, noise monitoring terminals and complaints.
Cat AB aircraft	Category A and B aircraft are light and propellor driven aircraft. This includes General Aviation aircraft (Cat A) and turbo-propellor aircraft such as the ATR72 (Cat B).
Cat CD aircraft	Category C and D are heavier, jet aircraft.
Runway Naming	<p>Runways are named based on the direction (or heading) an aircraft faces during an operation on that runway. For parallel runways, the L or R indicates whether it is on the left or the right.</p> <p>Dublin Airport has three runways:</p> <ul style="list-style-type: none">• South Runway - Operations are either on RW28L (facing west) or on RW10R (facing east)• North Runway – Operations are either on RW28R (facing west) or on RW10L (facing east)• Cross Runway – operations are either on RW16 (facing south) or on RW34 (facing north)
Wind Rose	Circular graph of wind strength and direction issued by Met Eireann. As aircraft need to take-off and land when facing into the wind (except in low wind conditions less than 5 knots), the wind rose will give an indication of runway use.
YTD	Year To Date
Zones A to F	The "zones" are runway end zones defined for this report. For example, Zone A is west of the South Runway and is overflowed by arrivals on RW10R and departures on RW28L.

August 2025 Operations – Movements and Runway Use



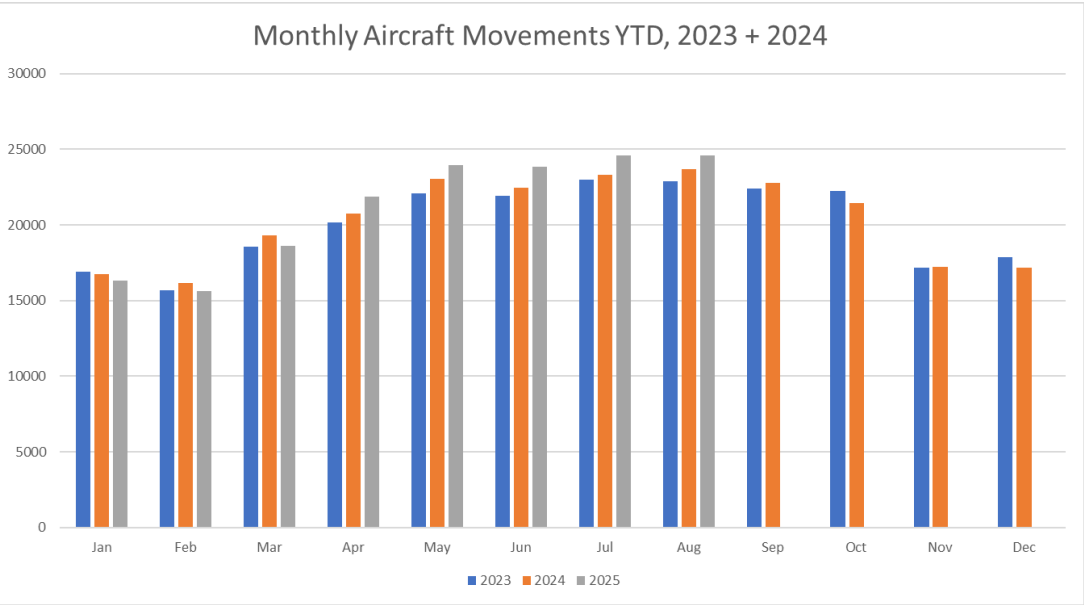
Aircraft Movements (Cat ABC&D) August 2025

Zone		Arrivals		Departures		Total
A	South Runway	from West (RW10R)	460	to West (RW28L)	974	1434
B		from East (RW28L)	8,041	to East (RW10R)	4,156	12,193
C	North Runway	from West (RW10L)	3,607	to West (RW28R)	7,161	10,768
D		from East (RW28R)	169	to East (RW10L)	3	172
E	Cross Runway	from North (RW16)	40	to North (RW34)	0	40
F		from South (RW34)	0	to South (RW16)	28	28
			12,317		12,322	24,639



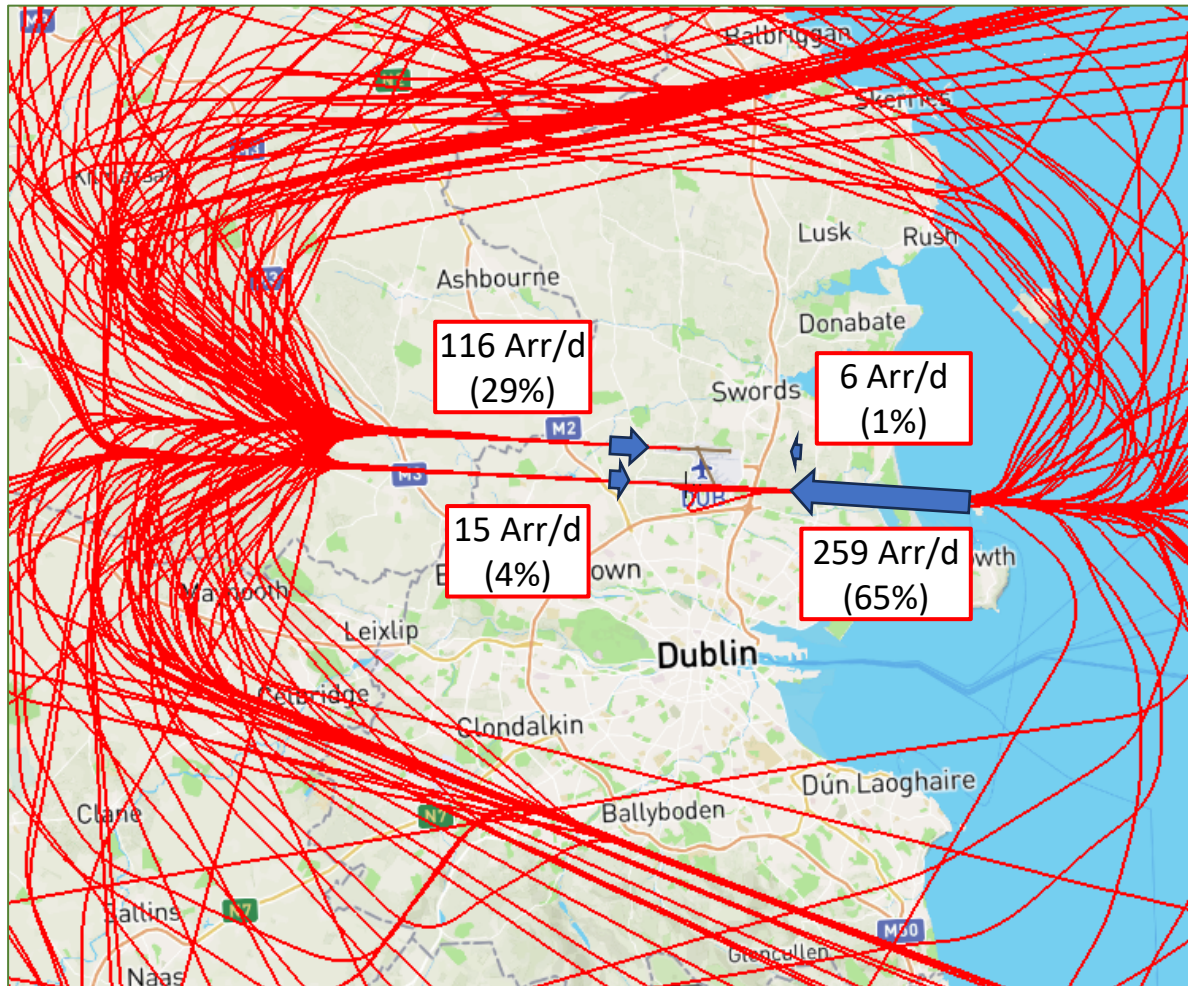
August 2025 Wind Rose:

shows percentage of time in each wind direction.
Table below shows 2024 and YTD – westerly and easterly operations



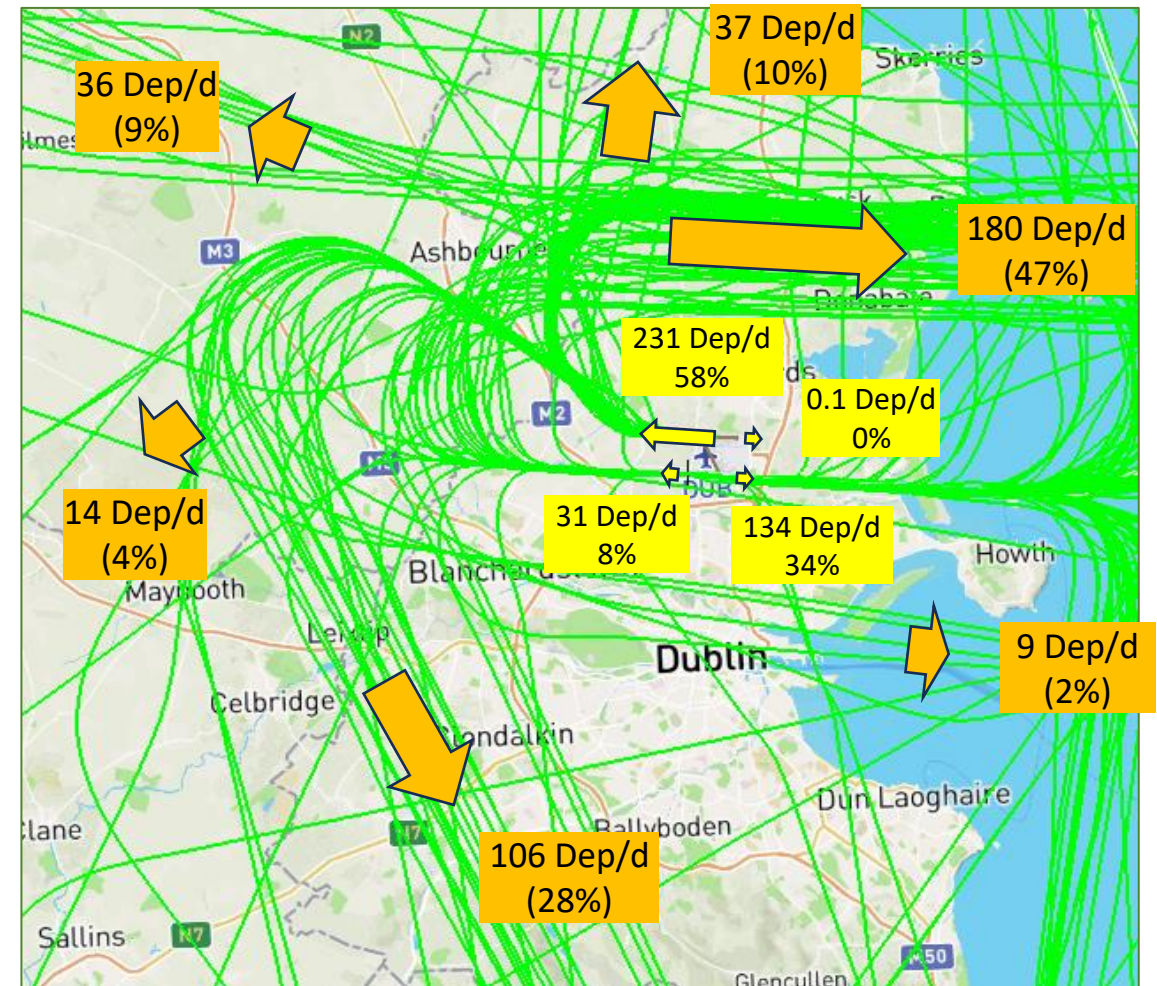
		Jan	Feb	Mar	Apr	May	Jun	Jul	Aug	Sep	Oct	Nov	Dec	Year
2025	W	82%	45%	55%	32%	44%	80%	80%	67%					
	E	18%	55%	45%	68%	56%	20%	20%	33%					
2024	W	86%	87%	56%	78%	65%	89%	81%	90%	61%	63%	70%	88%	76%
	E	14%	13%	44%	22%	35%	11%	19%	10%	39%	37%	30%	12%	24%

August 2025 Operations – Runway and Track Use



Graphic depicts:

- Average arrival movements per day (d) on each main runway
- % arrivals on each main runway this month
- Note: example flight track selection used



Graphic depicts:

- Average departure movements per day on each main runway (yellow boxes)
- % departures on each main runway this month (yellow boxes)
- Average departures per day on each main track swathe (orange boxes)
- Note: example flight track selection used

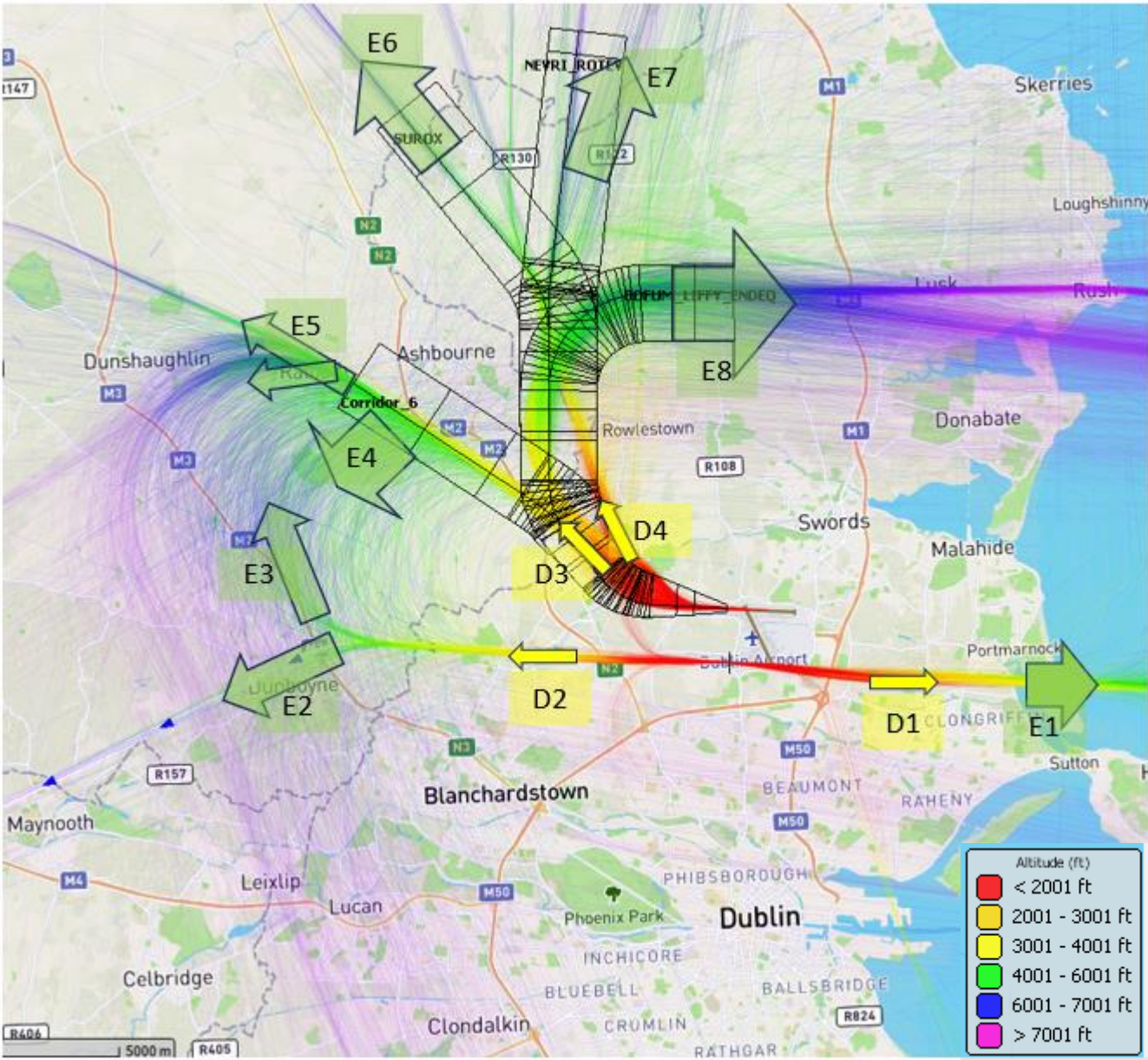
2024 Departure Swathe Data – Runway and Track Use

~1,000 – 3,000 ft (D1 – D4)

	Swathe	Avg. Dept. per day	Percentage of Departures
D1	10R	81	24%
D2	28L	34	10%
D3	28R Jet	195	58%
D4	28R Turbo-prop	24	7%

~4,000 – 6,000 ft (E1 – E8)

	Swathe	Avg. Dept. per day	Percentage of Departures
E1	10R (easterly dep)	81	24%
E2	28L, S- & W-bound (left turn)	15	4%
E3	28L, N- & E-bound (right turn)	18	5%
E4	28R, S- & W-bound, left turn from NPR	27	8%
E5	28R, S- & W-bound, exit end of NPR	51	16%
E6	28R, NW-bound	6	2%
E7	28R, N-bound	24	7%
E8	28R, E-bound	109	33%

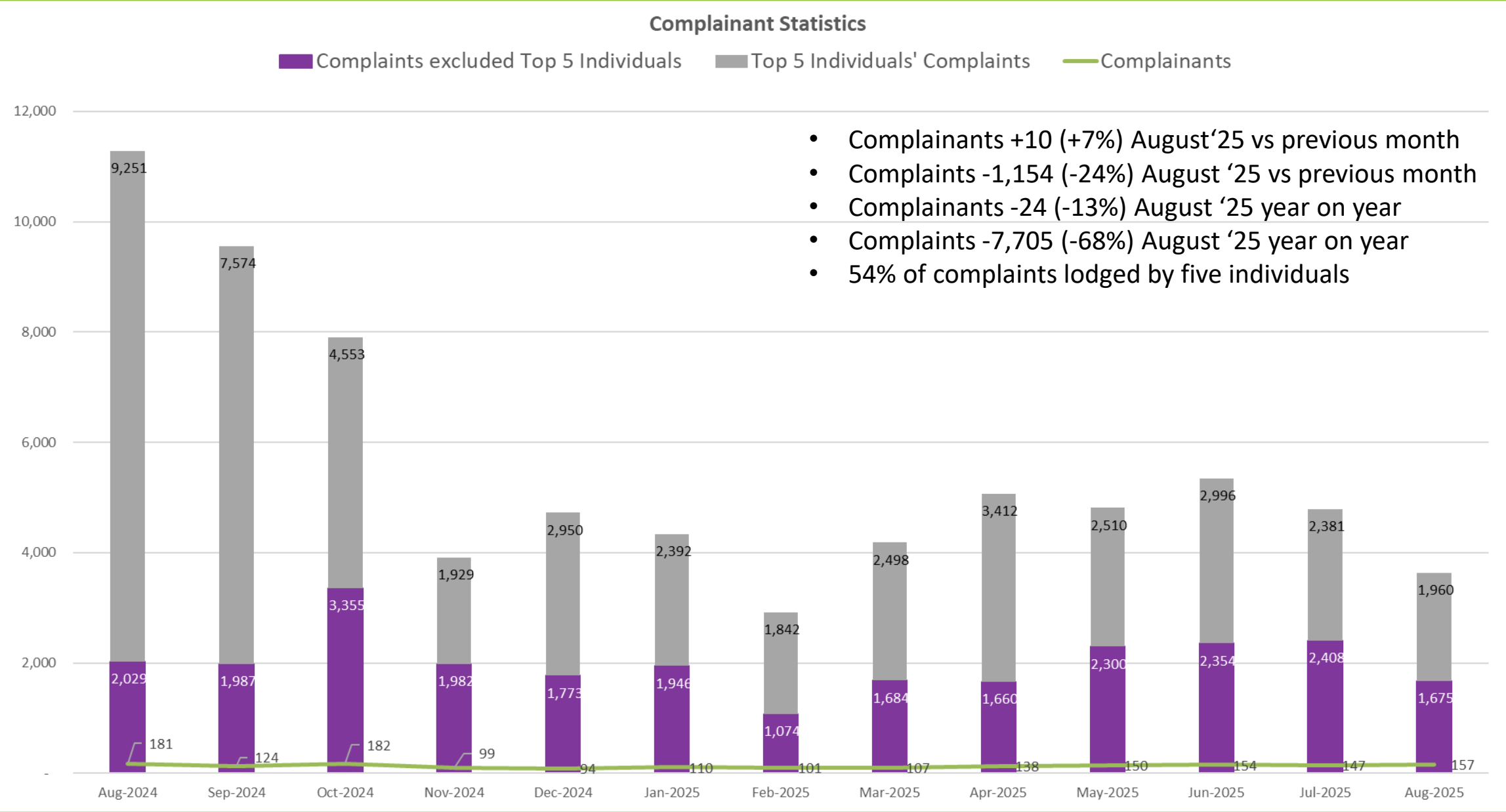


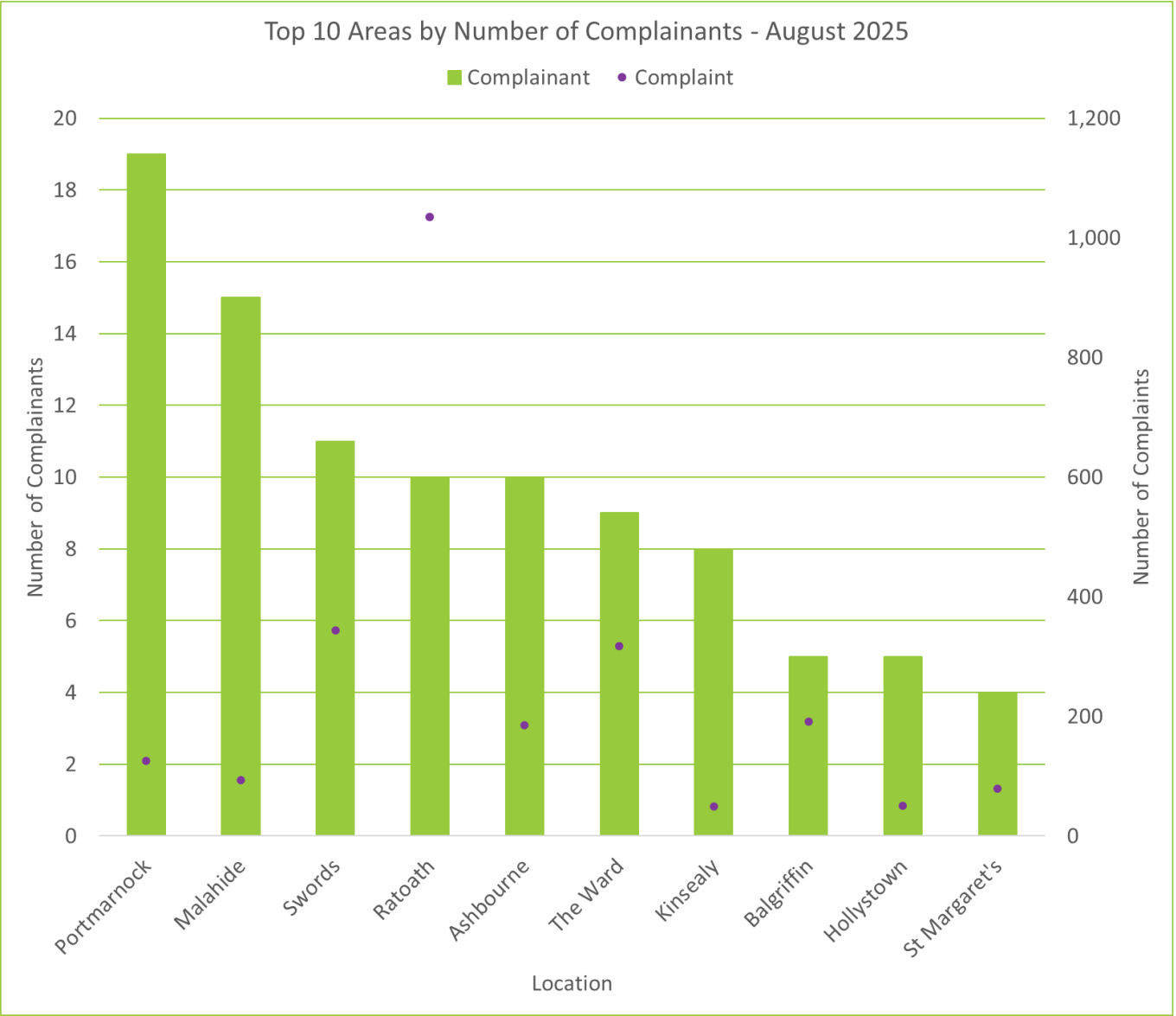
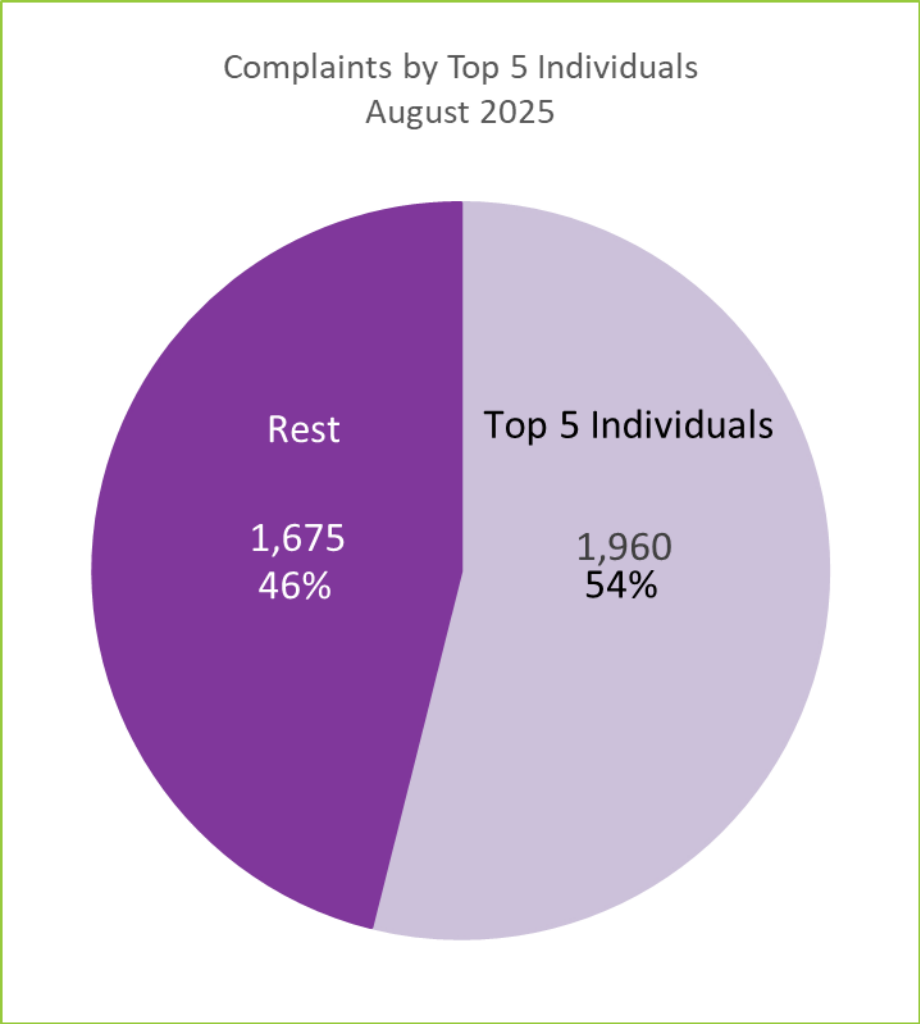
August 2025 – Total Movements in the Month by hour of day

Night Hours			
Hour of day	Arrivals	Departures	Movements
00:00	540	60	600
01:00	310	10	320
02:00	40	50	90
03:00	40	20	60
04:00	190	20	220
05:00	120	180	310
06:00	170	840	1010
23:00	440	100	540
Total	1860	1270	3130

Day Hours			
Hour of day	Arrivals	Departures	Movements
07:00	470	1060	1530
08:00	670	760	1430
09:00	680	620	1300
10:00	680	710	1390
11:00	820	760	1580
12:00	760	710	1470
13:00	710	830	1540
14:00	760	780	1540
15:00	640	800	1450
16:00	550	770	1320
17:00	740	680	1420
18:00	740	760	1510
19:00	560	730	1290
20:00	480	510	990
21:00	540	350	890
22:00	650	210	860
Total	10450	11050	21500

* Rounded to nearest 10

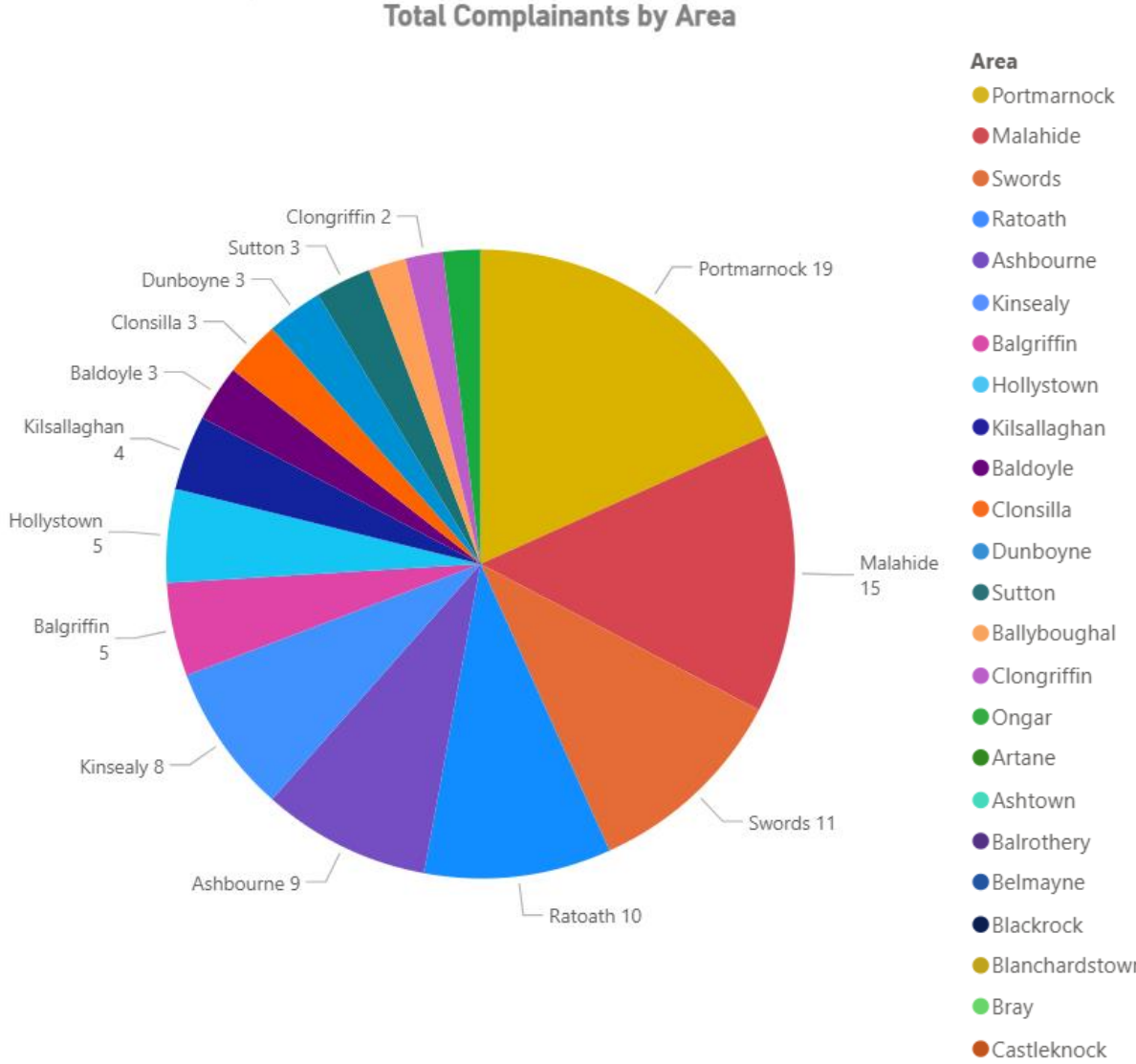
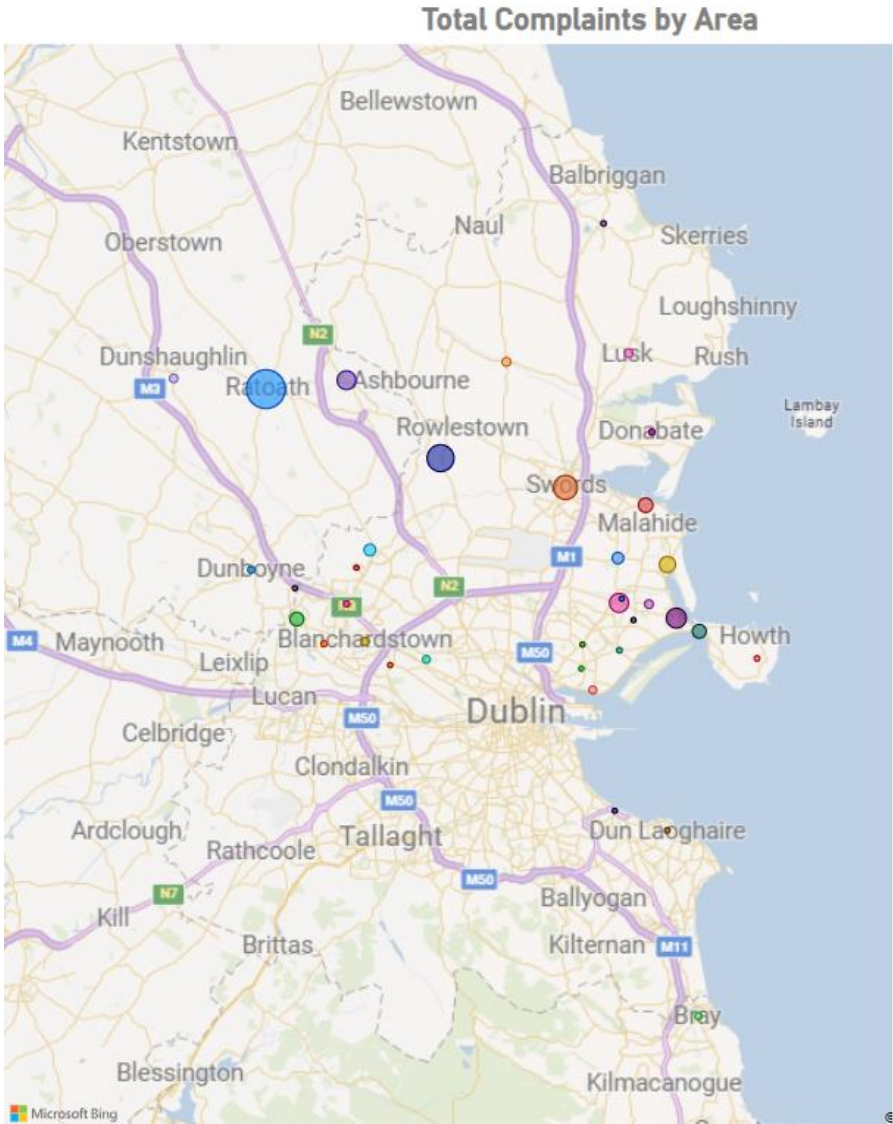




August 2025 – Complaints & Complainants Map



Suburb	Complaints	Complainants
Ratoath	1034	10
Kilsallaghan	447	4
Swords	344	11
Baldoyle	216	3
Balgriffin	191	5
Ashbourne	185	9
Portmarnock	126	19
Malahide	94	15
Sutton	84	3
Ongar	83	2
Hollystown	51	5
Kinsealy	49	8
Ballyboughal	20	2
Clongriffin	19	2
Lusk	19	1
Dunshaughlin	17	1
Blanchardstown	15	1
Clontarf	13	1
Ashtown	11	1
Bray	9	1
Dunboyne	8	3
Co. Meath	6	1
Clonsilla	4	3
Donabate	4	1
Mulhuddart	4	1
Balrothery	2	1
Dun Laoighaire	2	1
Howth	2	1
Raheny	2	1



August 2025 - Noise Complaints – by Hour of Operations

Night		
Hour of operation	Number of complaints	Number of complainants
00:00	147	39
01:00	56	15
02:00	49	11
03:00	21	14
04:00	36	22
05:00	59	20
06:00	277	26
23:00	136	37
Total	781	

Day		
Hour of operation	Number of complaints	Number of complainants
07:00	523	40
08:00	290	32
09:00	203	25
10:00	128	24
11:00	116	27
12:00	129	30
13:00	142	26
14:00	96	19
15:00	82	20
16:00	97	16
17:00	191	25
18:00	177	31
19:00	218	23
20:00	175	21
21:00	123	23
22:00	164	33
Total	2,854	

Part 2: Flight Track Monitoring



Page	Page Heading	Page Content
14.	Explanation of Terms	
15.	Standard Instrument Departures (SID) North Runway	<ul style="list-style-type: none"> AirNav Ireland maps displaying the departure SIDs from North Runway towards the West and the East.
16.	Standard Instrument Departures (SID) South Runway	<ul style="list-style-type: none"> AirNav Ireland maps displaying the departure SIDs from South Runway towards the West and the East.
17.	Noise Preferential Routes (NPR)	<ul style="list-style-type: none"> Map showing the Noise Preferential Routes (NPR) for Jet Aircraft Departures from the North and South Runways in both Easterly and Westerly directions.
18.	Departure Track Adherence data (2024 and YTD 2025)	<ul style="list-style-type: none"> Chart and table of the percentages of departures each month since January 2024 that operated within the NPR until reaching the minimum height.
19.	Track NPR Deviation Examples – North Runway	<ul style="list-style-type: none"> Maps showing examples of aircraft departure flight tracks from the North Runway that left the NPR before reaching the required minimum height of 4,000 ft.
20.	Track NPR Deviation Examples – South Runway	<ul style="list-style-type: none"> Maps showing examples of aircraft departure flight tracks from the South Runway that left the NPR before reaching the required minimum height of 3,000 ft.

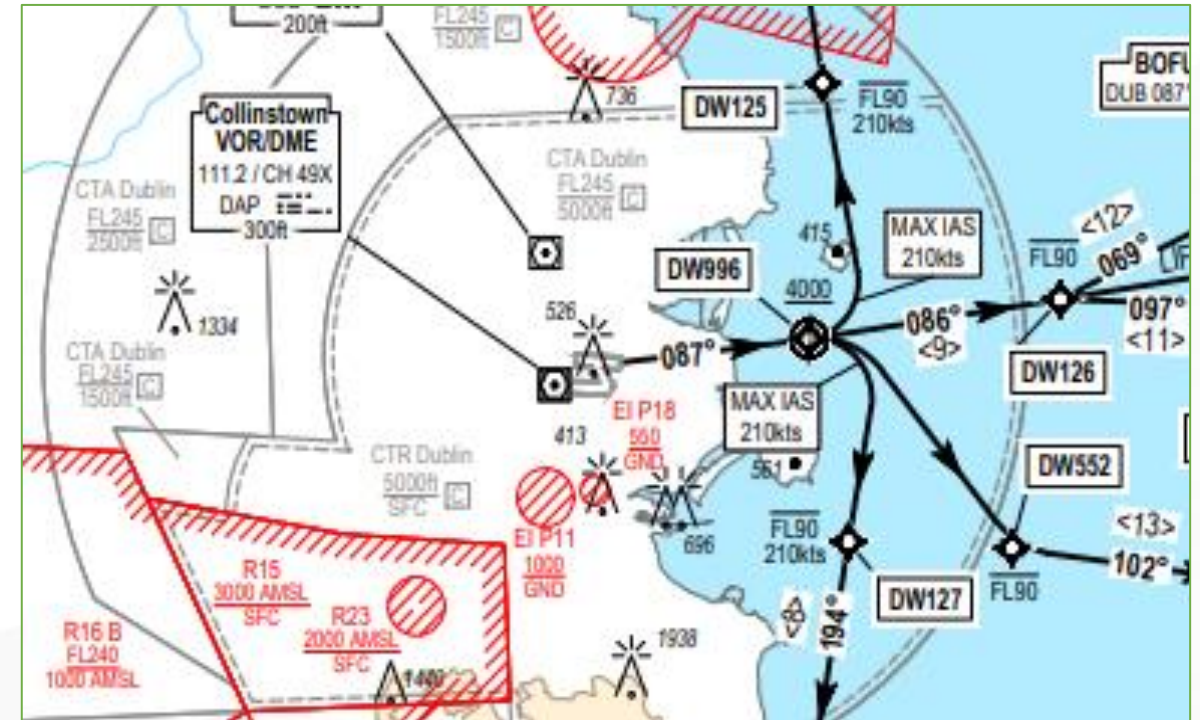
Term	Definition
Arrival Tracks	Arriving aircraft must fly in a straight line for at least the final 11km of their approach. Aircraft come into the airport at a precise downward angle of 3 degrees, which means that they are at a height of 1,800ft when they join the final approach at the 11km point.
Departure Tracks	Departing jet aircraft are required to follow procedures defined by the SID and to stay within the Environmental Corridor, also called the Noise Preferential Route (NPR).
Environmental Corridor	This is the same as the NPR (see below).
Noise Preferential Route (NPR)	Each SID (see below) at Dublin Airport has an "Environmental Corridor" also called a Noise Preferential Route (NPR). An NPR starts at the runway and is 240m wide and then, following the SID, fans out until the aircraft reaches a minimum altitude of 3,000 ft (South Runway) or 4,000 ft (North Runway). This only applies to jet aircraft – Cat C or D. (See Page 17)
Standard Instrument Departure (SID)	Depending on the departure runway and final destination, departing aircraft follow routes called Standard Instrument Departures (SID). SIDs allow aircraft to safely depart an airspace following a pre-defined route. (See Pages 15 and 16)
Track Adherence	To comply with an NPR, a departing jet aircraft needs to stay within the corridor until it reaches the required 3,000ft elevation (4,000ft for North Runway departures). After that, the pilot may fly a more direct heading for the final destination. An aircraft may be instructed by Air Traffic Control to leave the NPR before the required height due to weather, traffic or other considerations.
Track Deviation	A jet aircraft deviates from the NPR if it leaves the corridor below 3,000 ft (for South Runway departures) or 4,000 ft (for North Runway departures).
Vectoring	In some cases, Air Traffic Control may instruct a pilot to deviate from an NPR before reaching the minimum required height. This may be due to weather, traffic congestion, or other reasons. This is called Vectoring. In such cases, the track deviation is not considered to be an infringement (or violation) of the rule.

Standard Instrument Departures (SID) North Runway

- Jet aircraft departures are required to follow these Standard Instrument Departures (SID).
- SIDs are developed taking into account various safety, operational and environmental considerations amongst others.



SID for North Runway (28R) departures to the west (westerly operations in westerly winds)



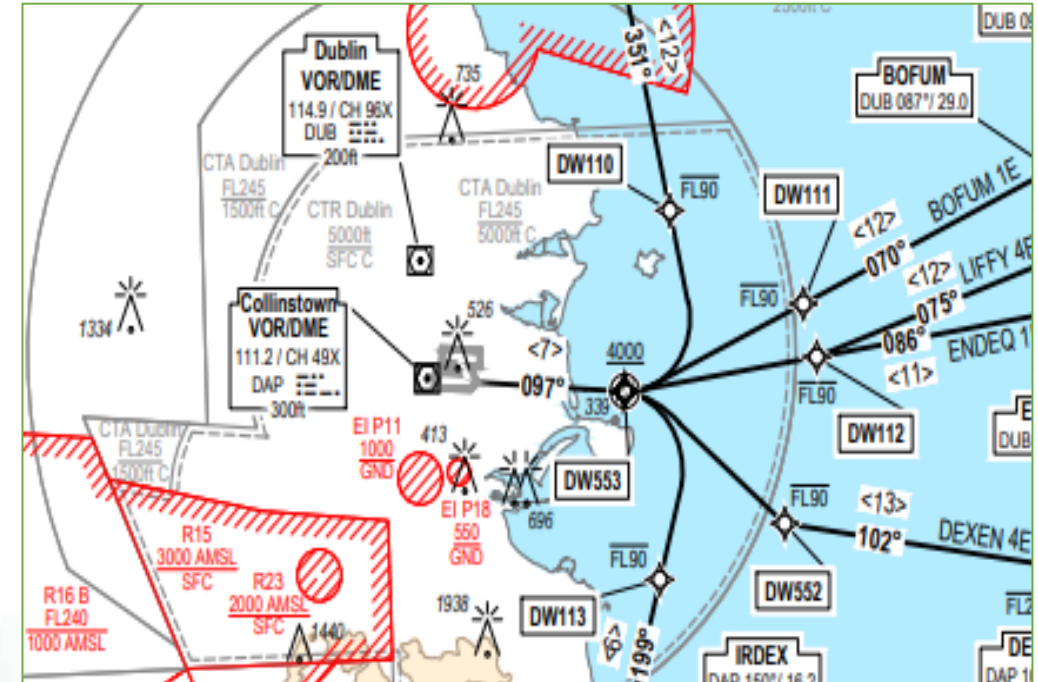
SID for North Runway (10L) departures to the east (easterly operations in easterly winds)

Standard Instrument Departures (SID) South Runway

- Jet aircraft departures are required to follow Standard Instrument Departures (SID)

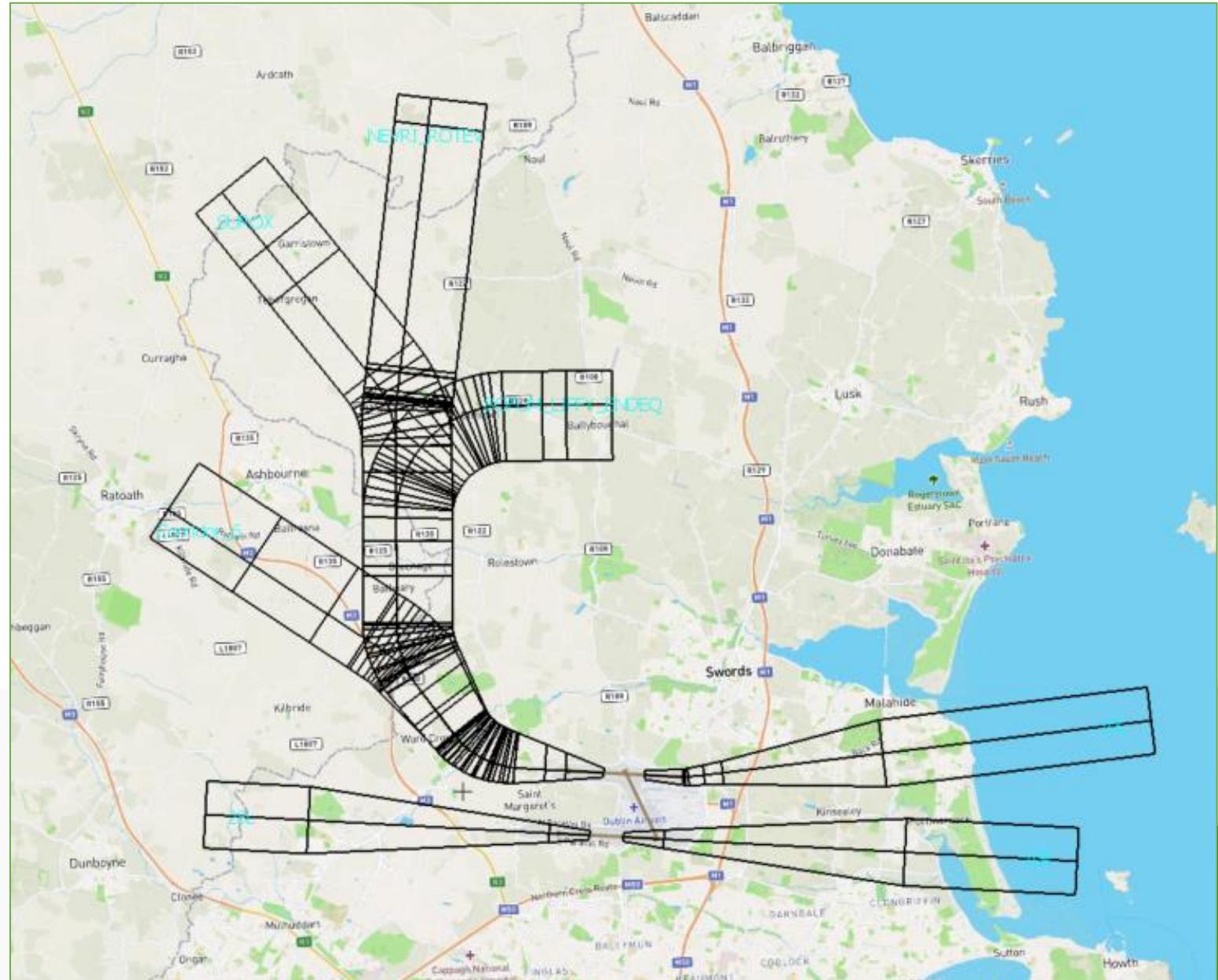


SID for South Runway (28L) Departures to the west (Westerly operations in westerly winds)



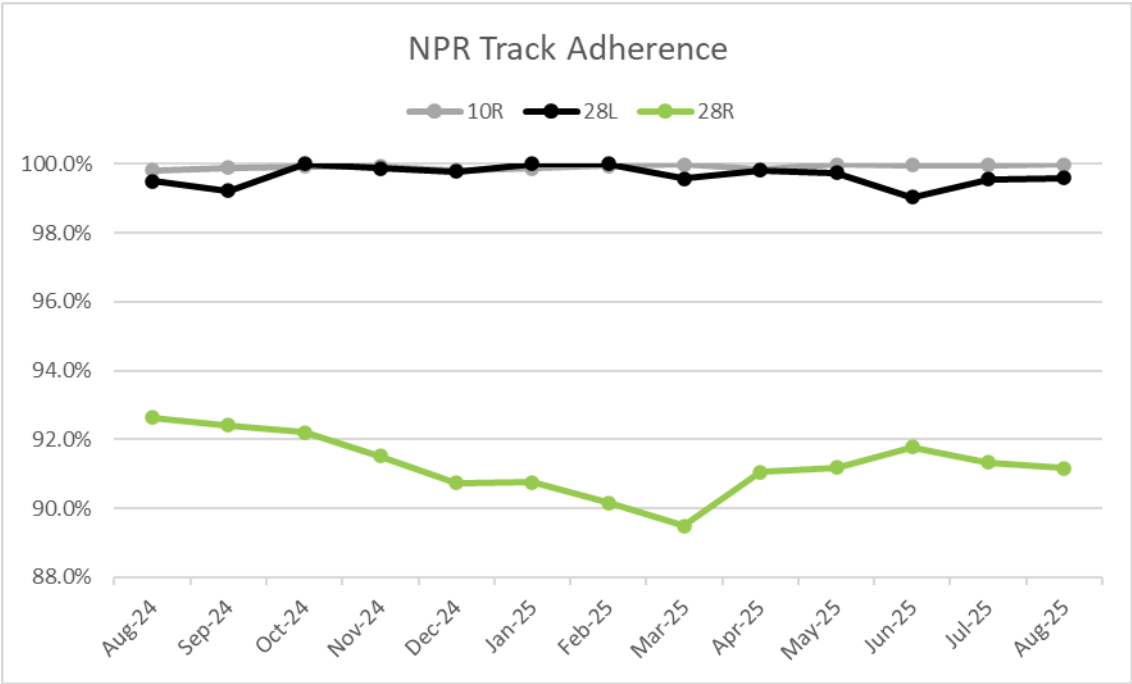
SID for South Runway (10R) Departures to the east (Easterly operations in easterly winds)

- Noise Preferential Routes (NPR) are passageways or corridors defined to either side of each SID path.
- An NPR is also called an Environmental Corridor.
- These only apply to the departures of jet (Category C and D) aircraft which are the larger aircraft.
- From South Runway, aircraft should not deviate from the NPR until reaching an altitude of 3,000ft.
- From North Runway, aircraft should not deviate from the NPR until reaching an altitude of 4,000ft.
- Deviation from the NPR is only permitted if directed by Air Traffic Control.

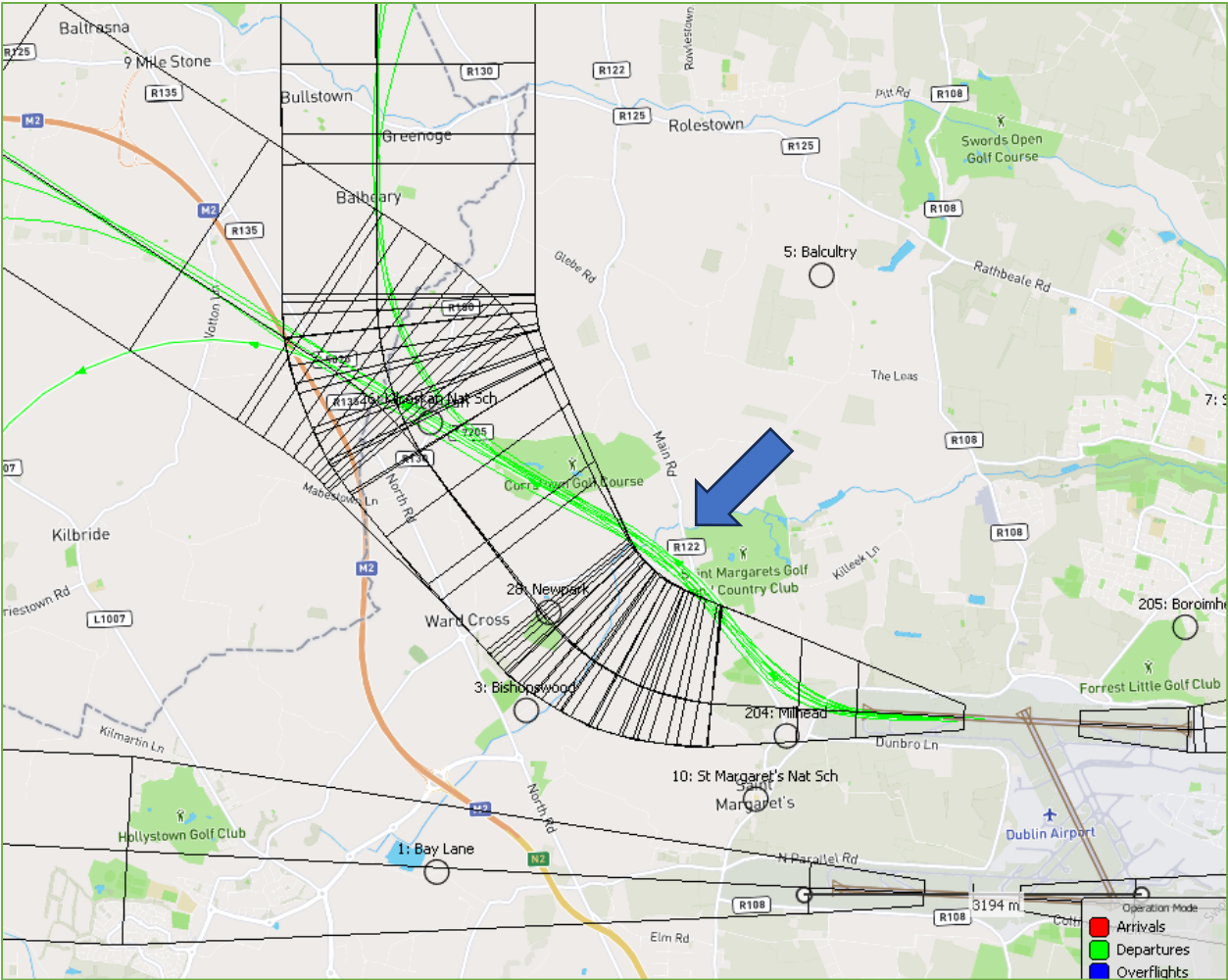


Departure Track Adherence (Monthly 2024 and 2025 YTD)

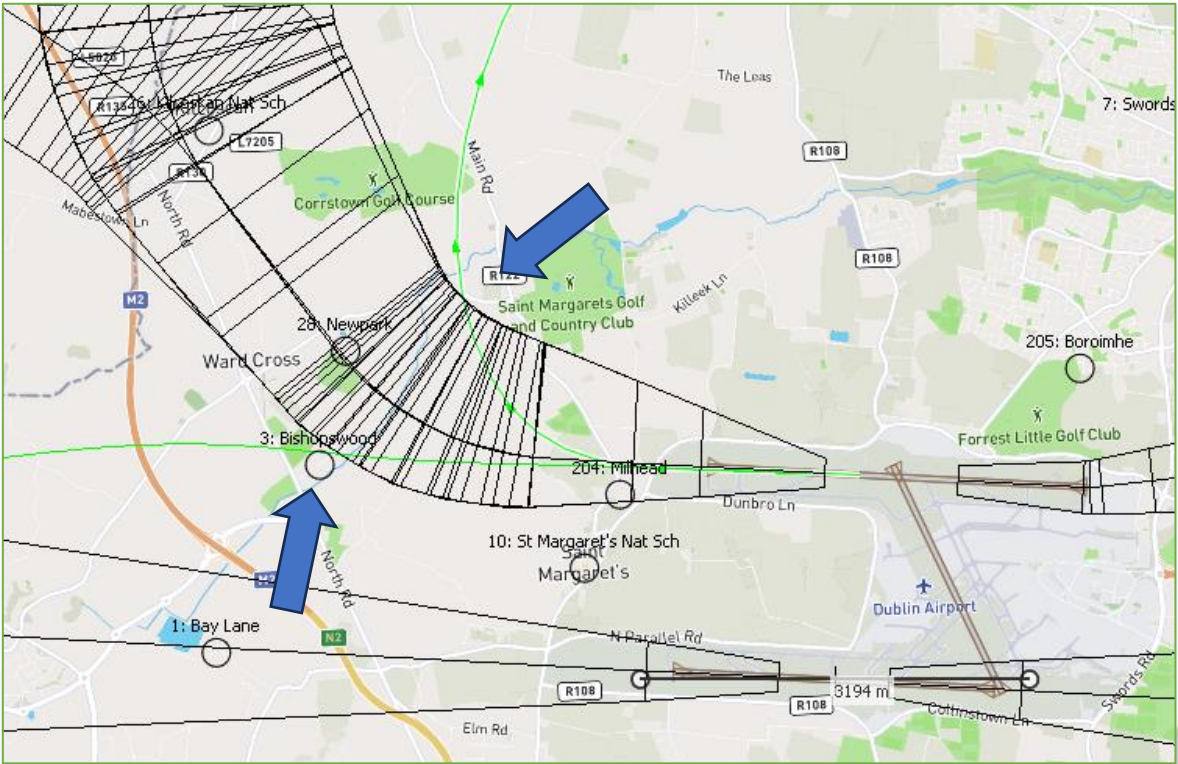
- Track Adherence refers to jet aircraft departures that remain within the NPR up to the minimum height.
- Both runways are displaying a high level of track adherence (over 90% for North Runway westerly and South Runway – westerly and easterly - is close to 100%).
- Further work is underway on improving track adherence which will include the implementation of a tool which can be used by AirNav Ireland and airlines to track and manage deviations and conduct detailed investigations into individual deviations.
- Note: North Runway easterly and Cross Runway operations are too seldom used to report.



Departure Runway	Jan	Feb	Mar	Apr	May	Jun	Jul	Aug	Sep	Oct	Nov	Dec
10R (South Runway)	99.9%	99.9%	100%	99.9%	100%	100%	100%	100%				
28L (South Runway)	99.9%	100%	99.6%	99.8%	99.7%	99.0%	99.6%	99.6%				
28R (North Runway)	90.7%	89.9%	89.5%	90.9%	91.0%	91.7%	91.3%	91.2%				
Total Airport (2025)	93.3%	96.1%	95.0%	97.4%	96.7%	94.0%	93.8%	94.8%				
Total Airport (2024)	93.9%	94.0%	96.5%	95.9%	96.8%	95.1%	95.4%	93.6%	95.8%	95.5%	94.7%	92.8%

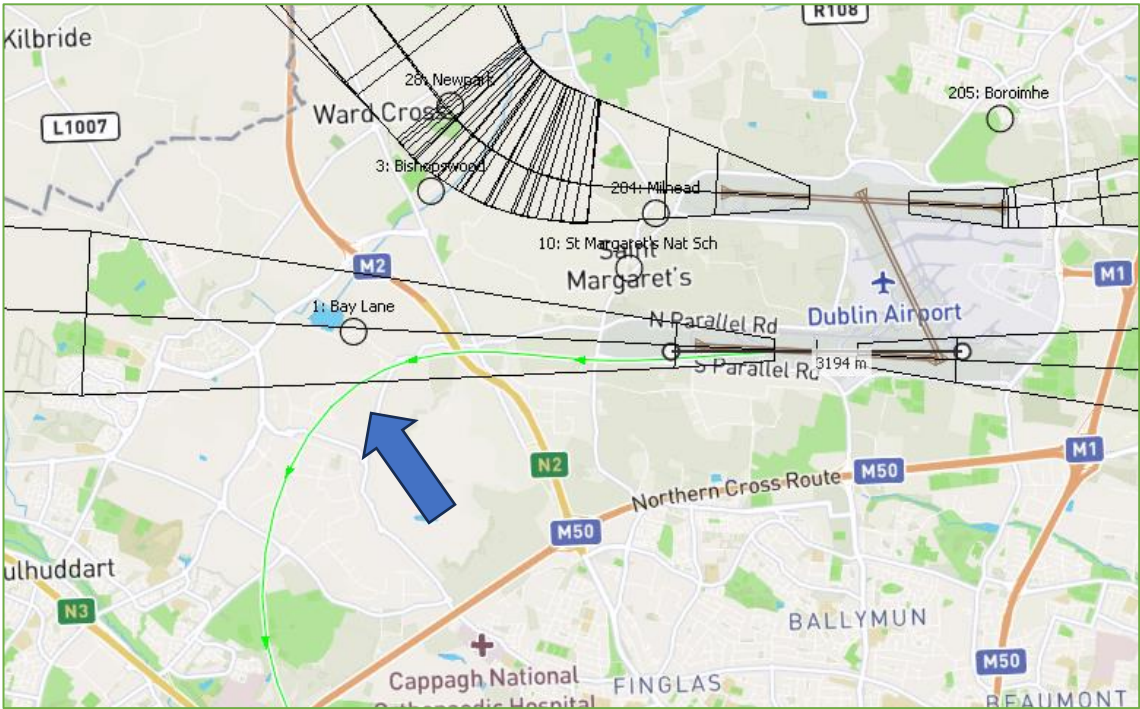


The above diagram displays a number flights which exited the North Runway NPR and then re-entered the NPR. This is a known issue for a small percentage of aircraft and Dublin Airport is working with the airlines and the aircraft manufacturer on resolving it.

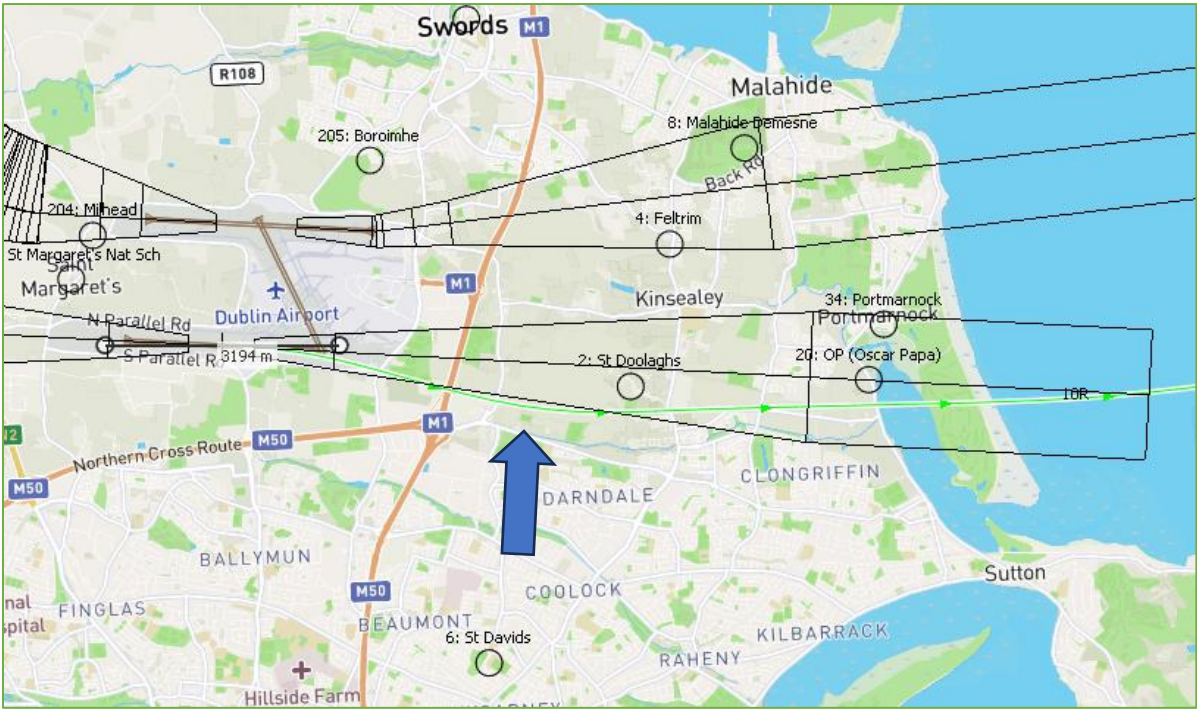


The above diagram displays two different departing flights which exited the North Runway NPR before they would have reached 4,000 ft altitude.

Track NPR Deviation Examples – South Runway



A jet aircraft departed the South Runway heading west and then turned left (southward) not far after the M2 motorway before reaching 3,000ft.



This jet aircraft departed the South Runway heading east. It deviated from the NPR for a short distance and then returned to the corridor, to continue on the correct path.

End

**For further information, please visit
our website:**

www.dublinairport.com